

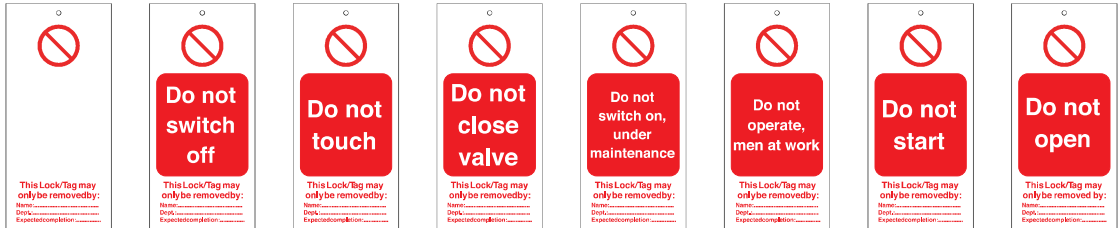
i Tagout is the placement of a tag, which indicates that the energy-isolating device and the equipment being controlled **MUST NOT** be operated until the tag has been removed.



Warning tags

Indicate who is responsible for placing a Lockout device and who is authorised to remove it or make changes to it.

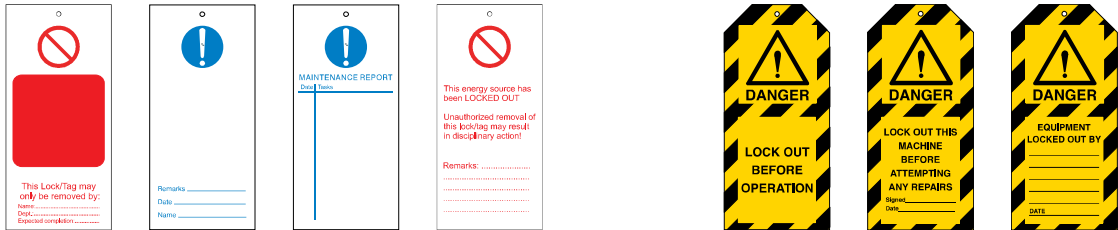
- Flexible polyester, resistant to water, oil and extreme temperatures
- Matt surface, can be written on with a ball point or felt-tip pen
- Hole diameter 7 mm, allows for placement on a padlock shackle
- Packaging: 10 tags with 10 cable ties



Height (mm)	Width (mm)	Order Reference							
110.00	50.00	225400	225401	225402	225403	225404	225405	225406	225408
160.00	75.00	262950	262951	262952	262953	262954	262957	265549	265550



Height (mm)	Width (mm)	Order Reference							
110.00	50.00	225409	225410	225411	225412	225407	225413	225414	225415
160.00	75.00	262962	262964	262965	256564	265548	256565	256566	256567



Height (mm)	Width (mm)	Order Reference			Reverse	Order Reference		
110.00	50.00	225416	225418	225420		225421	225422	225423
160.00	75.00	256571	225417	225419		256572	256573	256575



i Do not forget to order a Permanent Marker Pen (087052)

Height (mm)	Width (mm)	Order Reference				Reverse
110.00	50.00	225424	225425	225426	225427	
160.00	75.00	256576	256577	256578	256579	

Brady safety tags

Provide on-the-spot identification of safety measures!

- Easy application: can be attached in just seconds
- Tags have ties attached and can be applied to just about any part of any machine.
No need for extra ties!
- The tag is printed on both sides, making sure the vital information is always visible
- Material: Heavy Duty Polyester 0.25 mm thickness
- Size of attachment tie: 15 x 140 mm. Label size: 85 x 145 mm
- Packaging: 10 tags



Order Reference DANGER 241700	Order Reference DANGER Live wire 241710	Order Reference Do not use out of order 241716	Order Reference FAILED ELECTRICAL SAFETY TEST 241720
Order Reference CAUTION Out of Order 241701	Order Reference DANGER Contains asbestos 241712	Order Reference Do not switch on 241717	Order Reference TESTED FOR ELECTRICAL SAFETY 241721
Order Reference CAUTION Men working on this equipment 241703	Order Reference CAUTION Biohazard 241713	Order Reference Do not switch on under maintenance 241718	 Reverse
Order Reference DANGER Electric shock risk 241708	Order Reference DANGER Radioactive material 241714	Order Reference Do not touch 241719	

Mini tags

Order Reference	Legend	Height (mm)	Width (mm)	Quantity
196086	Do not operate	25,00	100,00	50
196087	Warning Electricity	25,00	100,00	50
196237	Défense d'enclencher	25,00	100,00	50
196238	Niet bedienen	25,00	100,00	50
196239	Nicht schalten	25,00	100,00	50
196240	Non utilizzare	25,00	100,00	50
196241	Üzemen kiviül	25,00	100,00	50
196242	No operar	25,00	100,00	50
196243	Nu folosiți	25,00	100,00	50
196244	Çalıştırmayın	25,00	100,00	50
196245	Danger Electricité	25,00	100,00	50
196246	Waarschuwing: Gevaarlijke elektrische spanning	25,00	100,00	50
196247	Warnung vor gefährlicher, elektrischer Spannung	25,00	100,00	50





Photo tags

Photo tags can be personalised by writing on special instructions, hazards or warnings and also has an area where a relevant employee photograph can be included which will give a more personal message.

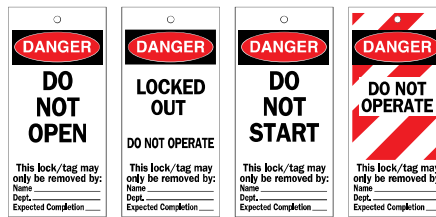
- Constructed of durable B-851 polyester
- Available with or without 1 mil (25,4 µm) polyester laminate on front
- Includes nylon fasteners

Order Reference	Description	Height (mm)	Width (mm)	Quantity
065500	Photo Tags (without laminate)	146.05	76.20	10
065501	Self-laminating Photo Tags	146.05	76.20	10
096222	Self-laminating Photo Tags	177.80	76.20	10



Machine related risk warning tags

- Pre-printed warning layout and blank reverse
- B-851 Heavy Duty Polyester
- Packaging: 10 tags



Height (mm)	Width (mm)	Order Reference
160,00	75,00	230778
		230779
		230780
		230781

Brady custom tags

To produce your custom tag(s), Brady requires the following information for each type/design of the tag you need:

1. Select from the 3 basic types of tags: General Warning, Electrical Warning, Prohibition (see sample previews below)
2. Select the size (110 x 50 mm or 160 x 75 mm)
3. Indicate quantity of packs (1 pack consists of 10 pcs of tags and 10 pcs of cable ties)
4. Define your text for the box in the central area of the tag

Send your request for quotation containing all information listed above to your Brady representative or distributor



General Warning



Electrical Warning



Prohibition

Two-part perforated tags

Two-part tags provide enhanced operational control and record keeping.

The stub is removed when the tag is attached to a lockout point. Only the employee in possession of the stub has the authority to remove the tag. After the job is done, the stub is returned to management for verification and monitoring of Lockout/Tagout activity in the plant. Matching identification numbers are printed on each part.

Heavy cardstock tags

- Economical cardstock tags are easy to write on using pen, pencil or permanent marker (B-853)
- Tear resistant 9.5 mm rolled brass eyelet
- Tie strings included for quick, easy attachment

Polyester tags

- 10 mil (1 mil = 25,4 µm) thick polyester enhances durability and makes it easy to remove chemicals, grease and grime (B-851)
- Write-on surface accepts marker, pen or pencil
- Weatherproof for outdoor use
- 9.5 mm rolled brass eyelet that fits over most padlock shackles
- Nylon cable ties included for easy, secure attachment



Order Reference	Text/Legend	Material	Brady Material No.	Height (mm)	Width (mm)	Quantity
105371	DO NOT OPERATE	Heavy Duty Polyester	B-851	177,80	101,60	25
105373	DO NOT OPERATE	Paper Cardstock	B-853	177,80	101,60	25
105370	EQUIPMENT LOCKED OUT	Heavy Duty Polyester	B-851	177,80	101,60	25
105372	EQUIPMENT LOCKED OUT	Paper Cardstock	B-853	177,80	101,60	25

Mini tags

- Suitable for use with TagLock, see page 55



Order Reference	Text/Legend	Material	Height (mm)	Width (mm)	Quantity
148824	DANGER, DO NOT OPERATE	Plastic	63,50	50,80	25



Print your own tags

See page 84 to find out more by Brady printers that will enable your to print your own tags when you need them, where you need them.