

## B<sup>1</sup> ceiling junction box

The new B<sup>1</sup> ceiling boxes simplify installation on the ceiling formwork. The innovative conduit entries enable conduits to be easily inserted into several ceiling boxes arranged in a row without having to cut them during the laying work. Due to the conduit entries located higher up, additional cut-outs of the reinforcement bars are unnecessary, ensuring fast insertion of the empty conduits on the ceiling.

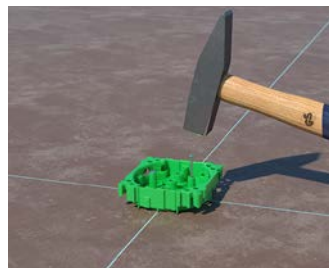
- Suitable for all types of formwork
- Flat front part enables smooth insertion of the reinforcing bars on the ceiling formwork
- Innovative conduit entries for fast processing on the construction site
- Larger mounting and installation space
- Mounting of a light hook in accordance with DIN EN 60670
- The proven KAISER colour coding system ensures that the installation can be checked quickly



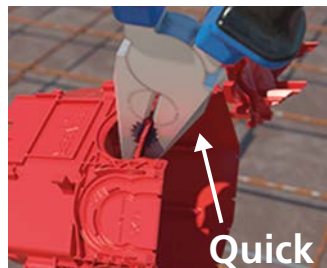
### Installation on the ceiling formwork



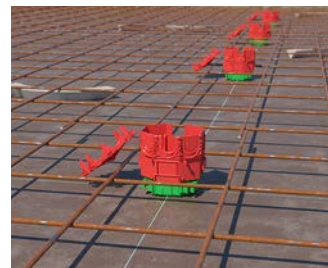
The exact position of the ceiling boxes is determined by means of a cord or tensioning a mason's lacing cord.



The shallow front part allows easy fixing to the ceiling formwork before the reinforcement bars are added.



The required conduit connection opening can be easily and exactly broken out with a quick tilting movement using a standard pair of combination pliers.



The conduit entries are above the lower reinforcement layer, so that no cutting of the reinforcement bars is necessary.



The advantage of the new conduit entry is that empty conduits can be inserted in several ceiling junction boxes without cutting the conduit beforehand.



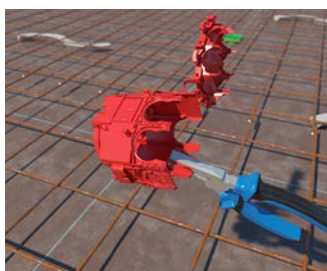
After final visual inspection of the conduits, the cover can be closed simply by hand, at the same time providing secure conduit retention.



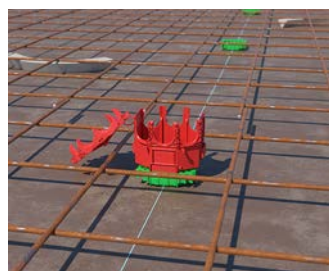
Universal screw-on surface / B<sup>1</sup> 45° universal ceiling exit (Art No. 1249-13).



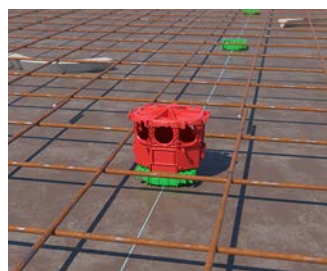
Universal screw-on surface / universal ceiling exit (Art. No. 1265-13).



When inserting several conduits next to each other, open the conduit entries with combination pliers...



...latch the rear part onto the front part...



...and close the back cover before inserting the conduits.



The conduits can now simply be inserted into the prepared openings.

## B<sup>1</sup> 45° domed box



- Rear part of box with holder for light hooks according to DIN EN 60670 (50 N)
- 2-piece with moulded rear part
- Suitable for all types of formwork
- Usable light hooks:
- 30 mm / Art. No. 1225-30
- 40 mm / Art. No. 1225-40
- 60 mm / Art. No. 1225-60



INNOVATION

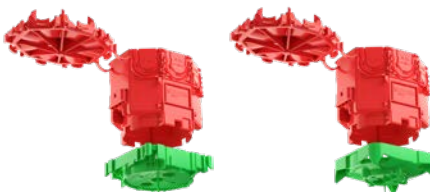


3D animation

Length x Width x Depth	75 x 85 x 64 mm	75 x 85 x 64 mm
Installation opening Ø	60 mm	35 mm
Break-out openings for DIN EN Ø 20/25 mm conduits	4	4
Markings for cables up to Ø 16 mm	4	4
Number of parts	2	2
 / 	Yes / Yes	Yes / Yes
<b>Art.-No.</b>	<b>1249-11</b>	<b>1249-12</b>
Inner packaging/shipping	20 / 200	20 / 200

## B<sup>1</sup> ceiling junction box



- Rear part of box with holder for light hooks according to DIN EN 60670 (50 N)
- 2-piece with moulded rear part
- Suitable for all types of formwork
- Usable light hooks:
- 100 mm / Art. No. 1225-10
- 120 mm / Art. No. 1225-12
- 140 mm / Art. No. 1225-14



INNOVATION



3D animation

Length x Width x Depth	94 x 75 x 95 mm	94 x 75 x 95 mm
Installation opening Ø	60 mm	35 mm
Break-out openings for DIN EN Ø 20/25 mm conduits	7	7
Markings for cables up to Ø 16 mm	7	7
Number of parts	2	2
 / 	Yes / Yes	Yes / Yes
<b>Art.-No.</b>	<b>1265-11</b>	<b>1265-12</b>
Inner packaging/shipping	20 / 100	20 / 100

# Ceiling boxes, ceiling junction boxes

for on-site mixed concrete

## B<sup>1</sup> large conduit ceiling junction box



- Rear part of box with holder for light hooks according to DIN EN 60670 (50 N)
- 2-piece with moulded rear part
- Suitable for all types of formwork
- Usable light hooks:
- 100 mm / Art. No. 1225-10
- 120 mm / Art. No. 1225-12
- 140 mm / Art. No. 1225-14



 INNOVATION



3D animation

<b>Length x Width x Depth</b>	<b>94 x 75 x 110 mm</b>
Installation opening Ø	60 mm
Break-out openings for DIN EN Ø 32/40 mm conduits	3
Markings for cables up to Ø 16 mm	3
Number of parts	2
 / 	Yes / Yes
<b>Art.-No.</b>	<b>1260-11</b>
Inner packaging/shipping	20 / 100

## B<sup>1</sup> 45° universal ceiling exit

- Accessory fitting without drilling or dowelling
- Rear part of box with holder for light hooks according to DIN EN 60670 (50 N)
- Grey front part version for exposed concrete applications
- 2-piece with moulded rear part
- Suitable for all types of formwork



 INNOVATION



3D animation

<b>Length x Width x Depth</b>	<b>90 x 90 x 72 mm</b>
Installation opening Ø	45 mm
Break-out openings for DIN EN Ø 20/25 mm conduits	4
Markings for cables up to Ø 16 mm	4
Number of parts	2
<b>Art.-No.</b>	<b>1249-13</b>
Inner packaging/shipping	20 / 200

## B<sup>1</sup> universal ceiling exit

INNOVATION



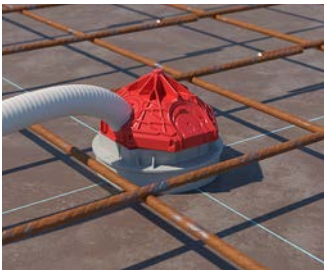
3D animation

- Accessory fitting without drilling or dowelling
- Rear part of box with holder for light hooks according to DIN EN 60670 (50 N)
- Grey front part version for exposed concrete applications
- 2-piece with moulded rear part
- Suitable for all types of formwork



<b>Length x Width x Depth</b>	<b>100 x 90 x 103 mm</b>
Installation opening Ø	45 mm
Break-out openings for DIN EN Ø 20/25 mm conduits	7
Markings for cables up to Ø 16 mm	7
Number of parts	2
<b>Art.-No.</b>	<b>1265-13</b>
Inner packaging/shipping	20 / 100

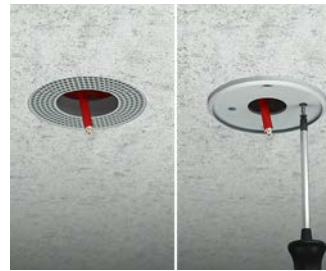
## Installation with the universal screw-on surface



Universal screw-on surface / B<sup>1</sup> 45° universal ceiling exit (Art No. 1249-13).



Universal screw-on surface / universal ceiling exit (Art. No. 1265-13).



Universal screw-on surfaces enable quick and easy accessory installation without drilling and dowelling....




...in the ceiling area, for example, smoke detectors can be installed here easily and dust-free.

## 115 large slab ceiling box

- Installation height 115 mm, with M5 metal nut for light hook (min. hook length: 115 mm + plaster thickness)
- with screw-on cover for on-site fitting of conduits
- suitable for all types of form-work
- maximum light hook load according to DIN EN 60670 100 N (10 kg)



<b>Depth</b>	<b>115 mm</b>
Exit opening Ø	60 mm
Diameter	102 mm
Markings for cables and DIN EN conduits up to Ø 25 mm	8
Markings for cables and DIN EN conduits up to Ø 32 mm	4
Number of parts	3
	Yes
<b>Art.-No.</b>	<b>1227-50</b>
Inner packaging/shipping	- / 100

# Ceiling boxes, ceiling junction boxes

for on-site mixed concrete

## Slab ceiling box for retrofitting

- for retrofitting on the construction site
- with M5 metal nut for light hook (hook length min. 95 mm + plaster thickness)



<b>Depth</b>	<b>100 mm</b>
Number of parts	2
required drilling hole	65 mm
<b>Art.-No.</b>	<b>1247-01</b>
Inner packaging/shipping	- / 100

## Light hook

- For retrofitting in ceiling boxes (EN 60670)
- maximum light hook load according to DIN EN 60670 100 N (10 kg)
- with M5 thread, fully insulated



Length of shank	Diameter hook	Overall length	Thread length	Art.-No.	Inner packaging/shipping
<b>30 mm</b>	26 mm	55 mm	10 mm	<b>1226-30</b>	- / 150
<b>55 mm</b>	26 mm	81 mm	10 mm	<b>1226-55</b>	- / 150
<b>65 mm</b>	26 mm	91 mm	10 mm	<b>1226-65</b>	- / 150
<b>75 mm</b>	26 mm	101 mm	10 mm	<b>1226-75</b>	- / 150
<b>85 mm</b>	26 mm	112 mm	10 mm	<b>1226-85</b>	- / 100
<b>95 mm</b>	26 mm	121 mm	10 mm	<b>1226-95</b>	- / 100
<b>105 mm</b>	26 mm	132 mm	10 mm	<b>1226-97</b>	- / 100
<b>115 mm</b>	26 mm	143 mm	10 mm	<b>1226-98</b>	- / 100
<b>125 mm</b>	26 mm	151 mm	10 mm	<b>1226-99</b>	- / 100



## Universal ceiling and wall exit

Universal ceiling and wall exit with KSK technology for especially quick and safe installation. The universal Ø 85 mm screw-on surface permits the clean installation of luminaires, smoke detectors etc. without the need for drilling.

- Open the conduit entry with a hammer blow
- Combination entry for two conduit sizes
- Thanks to the integrated conduit stopper, it is not necessary to shorten the conduit inside.
- Clean installation of accessories on the universal screw-on surface without the need for drilling or using dowels



### Processing instructions



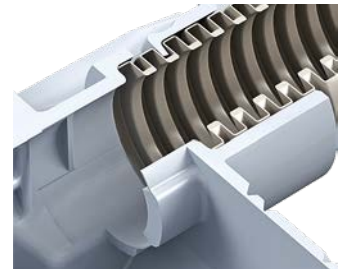
The screws used to attach the device...



...can be easily screwed into the universal screw-on surface.



M20 combi-entry



M25 combi-entry

### Lamp box for flexible corrugated plastic conduits

- Conduit entry limitation to prevent the need to shorten the conduit inside
- Meets the product standard EN 60670-21 (suspension load) with our hook bolts 1225-xx
- Max. suspension load 50 N (5 kg)



Product-Data

<b>Depth</b>	<b>105 mm</b>
Exit opening Ø	48 mm
M20/M25 impact couplings	4
Number of parts	1
Number of nails	2
Outer diameter	85 mm
M25/M32 break-out opening	2
M20/M25 break-out opening	2
650 °C /	Yes / Yes
<b>CE</b>	Yes
<b>Art.-No.</b>	<b>9959</b>
Inner packaging/shipping	- / 25

# Ceiling boxes and accessories




for on-site mixed concrete / precast concrete

## Ceiling junction box

- Conduit entry limitation to prevent the need to shorten the conduit inside
- suitable for all types of form-work
- max. light hooks load in accordance with DIN EN 60670 (50 N)



Product-Data

Depth	99 mm	99 mm
Exit opening Ø	60 mm	35 mm
M20/M25 impact couplings	4	4
Number of parts	2	2
Screw domes for device attachment	4	-
M25/M32 break-out opening	2	2
M20/M25 break-out opening	2	2
 650 °C / 	Yes / Yes	Yes / Yes
	Yes	Yes
<b>Art.-No.</b>	<b>1245-63</b>	<b>1245-62</b>
Inner packaging/shipping	10 / 100	10 / 100

## Light fitting support hooks, self-tapping

- For retrofitting in ceiling boxes (EN 60670)
- With self-forming thread, insulated
- Proof voltage: 2500 V tested
- Suspension load max. 5 kg

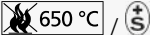




Length of shank	Art.-No.	Inner packaging/shipping
30 mm	1225-30	- / 100
40 mm	1225-40	- / 100
60 mm	1225-60	- / 100
80 mm	1225-80	- / 100
100 mm	1225-10	- / 50
120 mm	1225-12	- / 50
140 mm	1225-14	- / 50

## Ceiling and wall exit

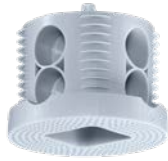
- for light hook attachment
- 2 entries (support shape) parallel to formwork level for 20 mm or 25 mm DIN EN conduits
- with formwork closing cover for one conduit entry





Length x Width x Depth	90 x 45 x 50 mm
Ceiling exit (CE) Ø	30 mm
Combination conduit entries M20/25	2
 650 °C / 	Yes / Yes
	Yes
<b>Art.-No.</b>	<b>9951</b>
Inner packaging/shipping	- / 50

## Ceiling exit

- for light hook attachment and clamping material holder (box shape)
- with large attachment surface for smoke or motion detectors under the ceiling (no need for dowels)
- 4 entries (support shape) parallel to formwork level, 2 entries (support shape) 30° to formwork level, for 20 mm Ø DIN EN conduit



<b>Depth</b>	<b>69 mm</b>
Break-out openings Ø 20 mm	8
Outer diameter	85 mm
 650 °C / 	Yes / Yes
<b>CE</b>	Yes
<b>Art.-No.</b>	<b>9955</b>
Inner packaging/shipping	- / 50

## Signal cover

- for wall and ceiling lights connection boxes
- for Art. Nos. 1248-40, 1245-62, 1248-50, 1248-44, 1264-50, 1211-36



<b>For installation opening</b>	<b>35 mm</b>
<b>Art.-No.</b>	<b>1181-35</b>
Inner packaging/shipping	- / 50