

Universal installation housing

Universal installation housing for the installation of almost all device types and shapes in concrete walls and ceilings. The housing system consists of nine different installation housings and an extensive range of accessories.

- For displays, LED lights and much more
- For installing almost all shapes and sizes
- For installation in walls or ceilings
- For in-situ or prefabricated concrete
- For horizontal or vertical formwork and for masonry



Application example



The concreted-in housing with flush-mounted finish of the mineral fibreboard. The groove in the mineral fibreboard indicates the maximum installation area.



The support element in the installation housing prevents it being pressed inward during concreting.



When attaching the device to the installation housing, use only screws that go into but not right through the mineral fibreboard cover (e.g. SPAX countersunk head screw 3.5 x 15 mm)!



The front cover can be easily cut to create virtually any opening shape.

Note

The indicated wall thicknesses refer to walls without a fire protection function. The following applies to fire protection walls: Remaining wall thickness must be min. 60 mm. When using halogen lamps, pay attention to maximum power (see product details).

Universal installation housing with mineral fibreboard cover

- two-part, consisting of a rear housing and a front part with a mineral fibreboard insert
- all-round groove indicates the maximum opening size
- for loudspeakers, displays and LED lights



Length x Width x Depth	90 x 90 x 70 mm	150 x 90 x 70 mm	128 x 128 x 86 mm
Installation opening	40 x 40 mm	100 x 40 mm	75 x 50 mm
Device installation depth	60 mm	60 mm	65 mm
Ceiling thickness	≥ 140 mm	≥ 140 mm	≥ 140 mm
Wall thickness	≥ 110 mm	≥ 110 mm	≥ 120 mm
suitable for horizontal formwork	Yes	Yes	Yes
suitable for vertical formwork	Yes	Yes	Yes
Art.-No.	1223-22	1224-22	1295-22
Inner packaging/shipping	- / 10	- / 10	- / 10

Universal installation housings for concrete ceilings and walls

Universal installation housing with mineral fibreboard cover

- two-part, consisting of a rear housing and a front part with a mineral fibreboard insert
- all-round groove indicates the maximum opening size
- incl. internal support element to strengthen the housing

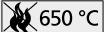


Length x Width x Depth	180 x 180 x 90 mm	250 x 220 x 90 mm
Installation opening	120 x 100 mm	200 x 145 mm
Device installation depth	65 mm	65 mm
Ceiling thickness	≥ 140 mm	≥ 140 mm
Wall thickness	≥ 120 mm	≥ 120 mm
suitable for horizontal formwork	Yes	Yes
suitable for vertical formwork	Yes	Yes
Art.-No.	1296-22	1297-22
Inner packaging/shipping	- / 10	- / 5

Universal installation housing with mineral fibreboard cover

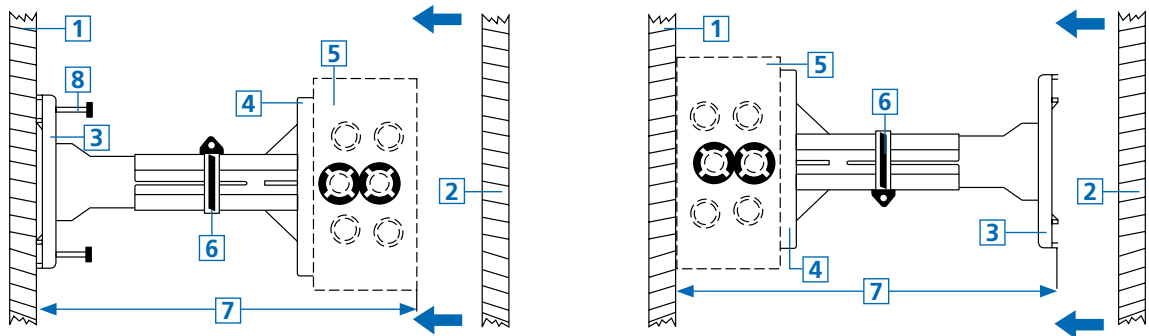
- suitable for installation in horizontal or vertical formwork and in masonry
- two-part, consisting of a housing and a mineral fibreboard cover
- Optional accessory: Set of Prefix® wing brackets



Length x Width x Depth	258 x 188 x 135 mm	258 x 188 x 200 mm	408 x 308 x 135 mm	408 x 308 x 235 mm
Installation opening	194 x 124 mm	194 x 124 mm	344 x 234 mm	344 x 234 mm
Device installation depth	105 mm	180 mm	115 mm	215 mm
Ceiling thickness	≥ 180 mm	≥ 240 mm	≥ 180 mm	≥ 280 mm
Wall thickness	≥ 180 mm	≥ 240 mm	≥ 180 mm	≥ 280 mm
Tube entries up to M25	12	20	16	24
Tube entries up to M32	8	8	8	20
Tube entries up to M40	4	8	2	20
Extensive pull-out apertures	8	8	10	10
Number of nails	8	8	8	8
max. output halogen luminaires	1x35 W QR-CBC, 1x50 W Alu	1x50 W QR-CBC, 1x75 W Alu	1x50 W QR-CBC, 1x75 W Alu	1x75 W QR-CBC, 2x50 W QR-CBC, 2x75 W Alu
Tube entries up to M20	-	4	-	-
Tube entries up to M50	-	4	8	12
Tube entries up to M63	-	-	-	4
 650 °C	Yes	Yes	Yes	Yes
Art.-No.	1298-37	1298-38	1297-34	1297-35
Inner packaging/shipping	- / 10	- / 10	- / 4	- / 4

Support technology for boxes and installation housings

Supporting by means of telescopic support: Junction boxes and installation housings can be installed on either side of a wall after the formwork has been placed on one side - either by fixing them directly to the rear (already placed) formwork or by supporting them off the rear formwork via a telescopic support. If the junction box is attached directly to the already-placed formwork or if heavy loading is to be expected due to a large concrete pouring height, additional securing by means of a telescopic support is recommended.



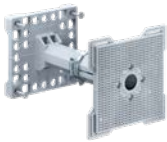
1 Working formwork | 2 Opposing formwork | 3 Base plate | 4 Supporting plate | 5 Junction casing | 6 Hose clamp | 7 Wall thickness +2 cm | 8 Nail

Note

When the formwork is closed, the junction box and the telescopic support are compressed between the formwork panels. The extra 2 cm of length allowed ensures sufficient pressure for a secure fit. Always tighten the hose clamp fully!

Telescopic support

- For supporting all boxes (99xx.xx without support element connection detail) on erected wooden formwork
- Fixing of the base plate by means of the four enclosed nails
- Fixing of the supported box by screwing onto the support plate
- Without extension piece, adjustable for wall thickness from 135 to 205 mm + depth of supported box. With enclosed extension piece, adjustable from 195 to 265 mm + depth of supported box.



Length x Width x Height	110 x 110 x 150-300 mm
Number of nails	4
 650 °C	Yes
Art.-No.	9957
Inner packaging/shipping	- / 10

International products



For international projects, we offer a large range of products that meet the relevant national standards and regulations.

- Dimensions and approvals based on national standards
- Suitable installation tools
- Many combination options



Installation



Fix the front part to the formwork (nail or screw fastening).



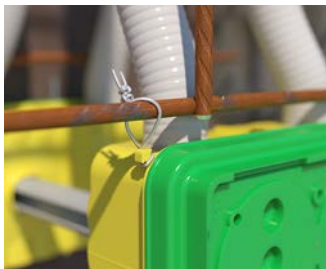
Make a conduit entry (punch pliers or universal opening cutter).



Inserting the conduits through exact openings.



Simple installation via snap-in connection.



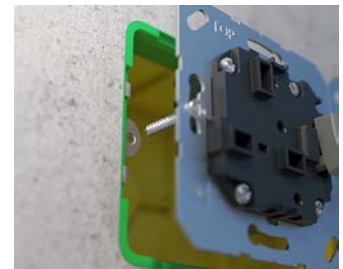
Tie lugs provide additional security if extreme loads are expected.



Open the concrete construction boxes, then install the accessory.



Simply click in the sliding nuts..



...enables the accessory inserts to be precisely aligned.

One-gang box for British accessories, one-gang



- Accessories can be aligned at any time by using to M 3.5 slide nuts
- Certified according to BS 4662 standard



One-gang box for British accessories, two-gang



- Accessories can be aligned at any time by using to M 3.5 slide nuts
- Certified according to BS 4662 standard



Length x Width x Depth	89 x 89 x 60 mm	149 x 89 x 60 mm
Screw spacing	60,3 mm	120,6 mm
Installation opening	68 x 68 mm	68 x 128 mm
Markings for cables and DIN EN conduits up to Ø 32 mm	4	6
Number of parts	2	2
Art.-No.	1223-41	1224-41
Inner packaging/shipping	- / 100	- / 100

Slide nuts for British accessories



- 2 pieces required per one-gang box
- for clipping into one-gang boxes 1223-41/1224-41
- protected against corrosion

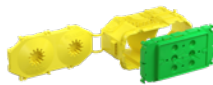


Art.-No.	1224-99
Inner packaging/shipping	100 / 100

B¹ one-gang box Italian standard with 3 modules



- For 3 modules in monoblock construction
- Suitable for all types of formwork
- 2-piece with moulded rear part
- Two slots for B¹ Prefix® system wings
- Rear part of box with slot for support element
- Suitable for American accessories



B¹ one-gang box Italian standard with 4 modules



- For 4 modules in monoblock construction
- suitable for all types of form-work
- 2-piece with moulded rear part
- Two slots for B¹ Prefix® system wings
- Rear part of box with slot for support element



Length x Width x Depth	160 x 75 x 91 mm	160 x 75 x 91 mm
Screw spacing	83 mm	108 mm
Break-out openings for DIN EN Ø 20/25 mm conduits	7	7
Break-out openings for DIN EN Ø 32/40 mm conduits	2	2
Markings for cables up to Ø 16 mm	7	7
Number of parts	2	2
Art.-No.	1269-03	1269-04
Inner packaging/shipping	5 / 50	5 / 50

One-gang box for Italian and American accessories



- For 3 modules in monoblock construction (single row)
- Installation opening 60 x 90 mm



One-gang box for Italian and American accessories



- Device screw spacing 2 x 83.5 mm, for installing Italian and American accessories
- for 2x3 modules in monoblock construction (double row)
- Installation opening 72 x 105 mm



Length x Width x Depth	100 x 68 x 55 mm	128 x 128 x 80 mm
Screw spacing	83 mm	-
Markings for cables and DIN EN conduits up to Ø 25 mm	8	-
Number of parts	2	2
Entry fields	8	8
possible DIN EN conduit sizes per entry field: 4 x 16 mm Ø, 3 x 20 mm Ø, 1 x 25 mm Ø, 1 x 32 mm Ø, 1 x 40 mm	-	Yes
	-	Yes
Art.-No.	1200-00	1295-02
Inner packaging/shipping	- / 100	1 / 10

One-gang box combinations for Swiss accessories



- incl. stabilising cover



Length x Width x Depth	78 x 78 x 58 mm
Break-out openings Ø 20 mm	9
Combination conduit entries M20/25	2
Number of nails	Yes
Halogen-free	Yes
650 °C /	Yes / Yes
/	Yes / Yes
Art.-No.	9918
Inner packaging/shipping	- / 50

Inlet box 2x1 to 4x1



- compatible with Feller SNAPFIX®
- Nail domes also serve as Prefix® connection points
- Increased stability
- Separately guided nailing points
- With separator wall and stabilisation lid
- For device screws Ø 3 mm
- Max. tightening torque 0.5 Nm



Length x Width x Depth	137 x 77 x 70 mm	197 x 77 x 70 mm	257 x 77 x 70 mm
Conduit entries M20	6	6	6
Conduit entries M25	6	6	6
Combination	2x1	3x1	4x1
Combination conduit entries M20/25	2	2	2
Drilling Center max. Ø 40 mm	--	2	4
650 °C /	Yes / Yes	Yes / Yes	Yes / Yes
/	Yes / Yes	Yes / Yes	Yes / Yes
Art.-No.	9902.22	9902.23	9902.24.40
Inner packaging/shipping	- / 50	- / 28	- / 20

Inlet box 2x2 to 4x2



- compatible with Feller SNAPFIX®
- Nail domes also serve as Prefix® connection points
- Increased stability
- Separately guided nailing points
- With separator wall and stabilisation lid
- For device screws Ø 3 mm
- Max. tightening torque 0.5 Nm



Length x Width x Depth	137 x 137 x 70 mm	197 x 137 x 70 mm	257 x 137 x 70 mm	197 x 197 x 70 mm
Conduit entries M20	8	8	8	8
Conduit entries M25	8	8	8	8
Combination	2x2	3x2	4x2	3x3
Combination conduit entries M20/25	4	4	4	4
Drilling Center max. Ø 40 mm	--	2	4	4
650 °C /	Yes / Yes	Yes / Yes	Yes / Yes	Yes / Yes
	Yes / Yes	Yes / Yes	Yes / Yes	Yes / Yes
Art.-No.	9902.24	9902.26	9902.28	9902.29
Inner packaging/shipping	- / 12	- / 8	- / 8	- / 8

Prefix® wing set for inlet box 9902.xx



- Facilitates fixing to the reinforcement
- Fast and easy installation on opposing formwork without support element and abutment
- Holding in place using the Prefix® installation technology leaves both hands free for securing with tie wires

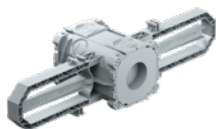


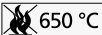

Length x Width x Height	150.1 x 59 x 16 mm	150.1 x 59 x 16 mm
Number of wings	4	12
650 °C	Yes	Yes
Art.-No.	9940.25	9940.50
Inner packaging/shipping	- / 5	- / 10

Prefix® concrete construction box



- compatible with Feller SNAPFIX®
- Fast and easy installation on opposing formwork without support element and abutment
- Holding in place using the Prefix® installation technology leaves both hands free for securing with tie wires
- Several units can be securely joined together to form norm-compliant combinations
- For device screws Ø 3 mm
- Max. tightening torque 0.5 Nm



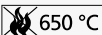



Depth	97 mm
Exit opening Ø	30 mm
Combination	1x1
 650 °C / 	Yes / Yes
 / 	Yes / Yes
Art.-No.	9940
Inner packaging/shipping	- / 10

Prefix® 2.0 concrete construction box



- compatible with Feller SNAPFIX®
- For device screws Ø 3 mm
- Max. tightening torque 0.5 Nm



Depth	90 mm	90 mm	90 mm
Combination	1x1	2x1 NUP	3x1 NUP
Break-out openings Ø 20 mm	8	16	24
Break-out openings Ø 25 mm	8	16	24
Combination conduit entries M20/25	4	4	4
Drill holes M32	4	4	4
Opening wall outlet	30 mm	30 mm	30 mm
 650 °C / 	Yes / Yes	Yes / Yes	Yes / Yes
 / 	Yes / Yes	Yes / Yes	Yes / Yes
Art.-No.	9941	9941.25	9941.35
Inner packaging/shipping	- / 15	- / 5	- / 5