



## Flush-mounting installation boxes

With the innovative KAISER UP-PLUS technology, the flush-mounting range impresses with a PLUS in terms of fitting convenience and flexibility. This range with the practical combination connection piece for quick, safe combinations ensures a torsion-proof pluggable connection for combinations with the snap-in connector, as well as a guaranteed standardised combination distance of 71 mm. The variable combination connection pieces are suitable for M20/M25 conduits and cables, and are standard for KAISER flush-mounting boxes. There are further entries for M20/M25 conduits and cables around the circumference of the box, as well as an entry for M20 conduits or cables at the bottom of the box. Four screw domes and two expanding claw fields offer secure, flexible mounting options for all types of devices, and thus round off the flush-mounting range.

- Variable combination connection piece for conduits up to M25 and cables
- Snap-in connector for torsion-proof and guaranteed standardised combination distance of 71 mm
- Flexible for screw and expanding claw fixing
- Optimum installation space
- UP-PLUS – with distance support, tunnel connector and KLEMMFIX® for quick, secure installation



### Entries for cables and DIN EN conduits



### Secure combination with the combination connection piece

An audibly secure combination with the KAISER combination connection piece. Place the boxes next to each other. Place the centering piece in the groove and press together until you hear a „click“. Now you have a torsion-proof combination with a standardised combination distance of 71 mm.




## One-gang box

- dimensions in accordance with German DIN 49073
- For M20/M25 conduits and cables



Product-Data


Depth	46 mm	46 mm
Screw spacing	60 mm	60 mm
Number of screw domes	4	4
Splayed claw fields	2	2
Conduit entries M20	3	3
Conduit entries M25	2	2
Combination conduit entries M20/25	2	2
Halogen-free	Yes	Yes
Device screws	-	2
	Yes	Yes
<b>Art.-No.</b>	<b>1055-04</b>	<b>1056-04</b>
Inner packaging/shipping	25 / 500	25 / 500

## Flush mounting one-gang junction box

- dimensions in accordance with German DIN 49073
- For M20/M25 conduits and cables




Product-Data

Depth	66 mm	66 mm
Screw spacing	60 mm	60 mm
Conduit entries M20	9	9
Number of screw domes	4	4
Splayed claw fields	2	2
Conduit entries M25	2	2
Combination conduit entries M20/25	2	2
Halogen-free	Yes	Yes
Device screws	-	2
	Yes	Yes
<b>Art.-No.</b>	<b>1555-04</b>	<b>1556-04</b>
Inner packaging/shipping	25 / 250	25 / 250

## One-gang junction box with side cavities for connections

- with side cavities for connections
- from above 4 x multi-lead wiring
- dimensions in accordance with German DIN 49073
- For M20/M25 conduits and cables



Length x Width x Depth	110 x 71 x 49 mm
Screw spacing	60 mm
Number of screw domes	4
Conduit entries M20	6
Conduit entries M25	4
Combination conduit entries M20/25	2
Device screws	2
Halogen-free	Yes
	Yes
<b>Art.-No.</b>	<b>1069-02</b>
Inner packaging/shipping	10 / 100

## Electronics box



The electronics box has space for electronic components. The accompanying separator wall also enables you to have different kinds of voltages in one box.

- For accessories and electronic components such as EIB actuators, communication and network technology, radio-controlled elements, alarm modules, etc.
- Can be combined with KAISER one-gang boxes via snap-in connector
- Optimal for use as an entry box for combinations
- The separator wall (supplied) turns it into a twin-chamber box



## Application



The range of possibilities is as diverse as their solutions.



Here for example is a relay for central control of several roller blind drives or a flush mounting EIB interface with a conventional button.



For communication equipment, the box volume is ideal for accommodating cable reserves.



Concealed installation of electronic components such as radio-controlled modules, EIB actuators, emergency lighting or cable lengths in data network technology.

## Electronics box

- Twin-chamber box (with separator wall)
- dimensions in accordance with German DIN 49073
- For M20/M25 conduits and cables



<b>Length x Depth</b>	<b>149 x 67 mm</b>
Screw spacing	60 mm
Number of screw domes	4
Conduit entries M20	11
Conduit entries M25	2
Combination conduit entries M20/25	4
Device screws	2
Halogen-free	Yes
	Yes
<b>Art.-No.</b>	<b>1068-02</b>
Inner packaging/shipping	10 / 100

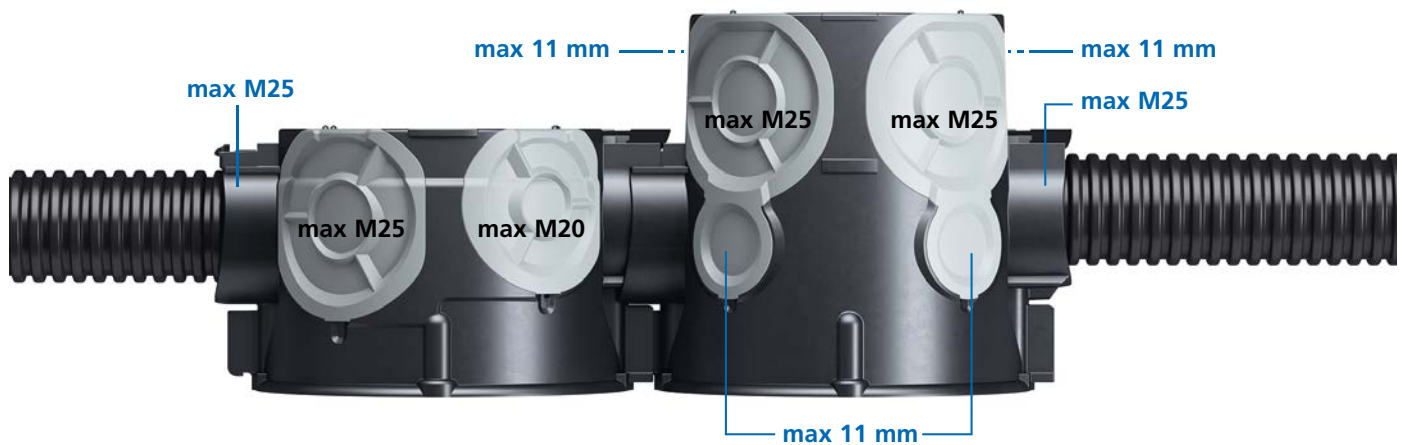
## Air-tight flush-mounting boxes

Flush-mounting boxes with ECON® technology permit guaranteed air-tight installation. They offer a variety of options for air-tight conduit and cable entries and can be either plastered or processed using Klemmfix®. The new ECON® Multi-Membrane allows the insertion of several cables without gusset formation or the insertion of conduits up to M25.

- Air-tight design with ECON® sealing membranes
- Avoids leaks in exterior facades made from hollow chamber blocks
- Variable and tool-free cable and conduit entries
- Torsion-proof, guaranteed standardised combination distance of 71 mm



### Entries for conduits and DIN EN conduits



### Processing instructions



The tool-free cable and conduit entries reduce installation time and make processing easier.



The elastic sealing membrane fits air-tight around the conduit or cable.



Each cable and conduit diameter up to Ø 25 mm can be installed quickly and air-tight.



Vertical draughts occur in hollow chamber blocks. The UP boxes with ECON® technology prevent air exchange.

# Air-tight one-gang boxes, One-gang junction boxes for flush-mounting installation

## One-gang box ECON® 10


- Air-tight design with ECON® sealing membranes
- dimensions in accordance with German DIN 49073
- For M20/M25 conduits and cables



3D animation



Product-Data

Depth	46 mm	46 mm
Screw spacing	60 mm	60 mm
Number of screw domes	4	4
Conduit entries M20	2	2
Conduit entries M25	2	2
Tool-free cable and conduit entries in the connector area up to M25	2	2
Air-tight	Yes	Yes
Halogen-free	Yes	Yes
Device screws	-	2
	Yes	Yes
<b>Art.-No.</b>	<b>1055-21</b>	<b>1056-21</b>
Inner packaging/shipping	25 / 500	25 / 500

## One-gang junction box ECON® 15


- Air-tight design with ECON® sealing membranes
- dimensions in accordance with German DIN 49073
- For M20/M25 conduits and cables



3D animation



Product-Data

Depth	66 mm	66 mm
Screw spacing	60 mm	60 mm
Number of screw domes	4	4
Splayed claw fields	2	2
Tool-free cable and conduit entries in the connector area up to M25	2	2
Tool-free cable and conduit entries up to 11 mm below the connector	2	2
Tool-free cable and conduit entries up to M25 around the box	4	4
Tool-free cable and conduit entries up to 11 mm around the box	4	4
Air-tight	Yes	Yes
Halogen-free	Yes	Yes
Device screws	-	2
	Yes	Yes
<b>Art.-No.</b>	<b>1555-21</b>	<b>1556-21</b>
Inner packaging/shipping	25 / 250	25 / 250



## Electronics box ECON® and two-gang junction box ECON®

The electronics box and two-gang junction box using ECON® technology and a multi-membrane are ideal for installation in masonry walls in which the interior plaster forms the air-tight closure on the room side. The electronics box ECON® provides a generously-sized accessory installation space and additional space for fitting small switch actuators, etc. The matching separator wall allows the standardised installation of bus and operating voltage in one box. The two-gang junction box ECON® with a multi-membrane makes it easier than ever to install special accessories. The large installation opening and the very large installation compartment make it possible to install block and pre-wired accessories, and they create space for the assembly of cables for multi-media connections.

- Elastic sealing membrane for guaranteed air-tightness
- Variable and toolless insertion of single cables, duplex cables and DIN EN conduits
- Additional space for decentral installation of KNX / LON UP actuators, flush-mounted cut-off relays for Venetian blinds, and many more
- Separator wall for standardised fitting of two voltage types in one box
- Maintenance of cable bending radii for network connection boxes – optimal data transfer
- Easy installation of pre-wired accessories and multi-media connection boxes



### Examples of applications for the ECON® electronics box



By inserting the separator wall, two different voltage types can be fitted in a standardised way in the electronics box. In addition, they provide a generously-sized installation space...



...for the decentral installation of, for example, small window actuators for controlling Venetian blinds and heating in the outer wall.



Thanks to the electronics box, it is easy to install radio-controlled actuators, etc., without putting excessive strain on cables or accessories.



Network connection boxes can be used while maintaining the cable bending radii and with the best possible data transfer speeds.

# Air-tight one-gang boxes, one-gang junction boxes for flush-mounting installation

## Examples of applications for the two-gang junction box ECON®



Thanks to its large installation opening without a central bridge, the two-gang junction box allows...



...the use of pre-wired accessories, block inserts, and many more.



It also provides an easy-to-use basis for the installation of multi-media connection boxes. The very large installation compartment has plenty of space for cable assembly.



Cable reserves and connection plugs can easily be inserted into the box and are then concealed behind the installation accessories.

## Installation and connection option with distance support



Two-row combination with the two-gang junction box ECON® (Art. No. 1656-21) with two distance supports (Art. No. 1159-34)...



...for an optimised installation pattern (4-fold next to each other).



Two-row combination with the two-gang junction box ECON® (Art. No. 1656-21) and air-tight one-gang junction boxes (Art. No. 1556-21) with two distance supports (Art. No. 1159-34)...



...for an optimised installation pattern (6-fold next to each other).

## Electronics box ECON®


- Separator wall for electrical circuit separation
- Air-tight design with sealing membranes



## Two-gang junction box ECON®

- Air-tight design with sealing membranes



Length x Width x Depth	149 x 80 x 68 mm	149 x 80 x 68 mm
Screw spacing	60 mm	60 mm
Number of screw domes	4	6
Device screws	2	4
Cable entries up to Ø 11 mm	4	4
Duplex cable entries 2 x up to 11 mm	4	4
Conduit entries M25	4	4
Tool-free cable and conduit entries in the connector area up to M25	4	4
Halogen-free	Yes	Yes
	Yes	Yes
<b>Art.-No.</b>	<b>1068-21</b>	<b>1656-21</b>
Inner packaging/shipping	10 / 100	10 / 100

## Sealing inserts

The sealing insert ensures air-tight closing of previously-installed one-gang boxes and one-gang junction boxes. It can be used in both flush-mounting and cavity wall installation. Its low installation depth makes use in one-gang junction boxes possible without restricting the wiring.

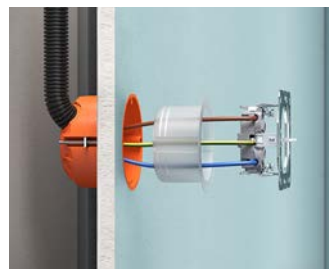
- Ensures later air-tight closing of one-gang boxes and one-gang junction boxes
- Toolless connection wire penetration is possible
- Guarantees later and permanent air-tightness



## Application



Later air-tight closing of flush-mounting boxes.



Later air-tight closing of cavity wall boxes.



Pre-punched entry markings permit toolless connection wire penetration up to 2.5 mm<sup>2</sup>.



Press sealing insert and installation accessories into the box and tighten with device screws.

## Sealing inserts

Sealing insert for retrofit sealing of existing installation boxes in air-tight building shells. The insert encloses the cables and creates a guaranteed air-tight installation space.



## Sealing inserts

- for retrofit sealing of all existing one-gang boxes and one-gang junction boxes
- permanently flexible plastic



<b>Depth</b>	<b>36,5 mm</b>
Diameter	60 mm
Air-tight	Yes
Halogen-free	Yes
<b>Art.-No.</b>	<b>1040-01</b>
Inner packaging/shipping	10 / 100





## Sealing plugs 16-40

Sealing plugs with ECON® technology for sealing all standard electrical installation conduits in installation boxes or at cable outlets. The long sealing plug with three sealing lips and in different widths adapts itself to the installation conduit in use and guarantees air-tight and smoke-tight closing, even when the conduits are cut at an angle. From conduit size M25 and up, the membrane surfaces are separated by bridges, which ensure secure cable routing and prevent damage and gaps between cables.

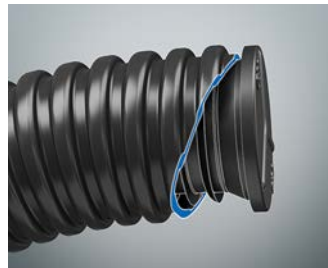
- For empty conduit installations in an air-tight design or in fire protection areas
- Sealing plug with three sealing lips and different widths adapts itself perfectly to the installation conduit and guarantees an air-tight end
- Elastic sealing membrane for guaranteed air-tightness
- Toolless cable entry
- Reinforcing ribs in the membrane ensure air-tightness for the cables
- For all installation conduits M16 - M40, Pg 9 – Pg 36, 3/4" and 5/8"



### Processing instructions



The long sealing plug with three sealing lips and different widths adapts itself perfectly to the installation conduit...



...and guarantees an air-tight end even when conduits are cut at an angle.

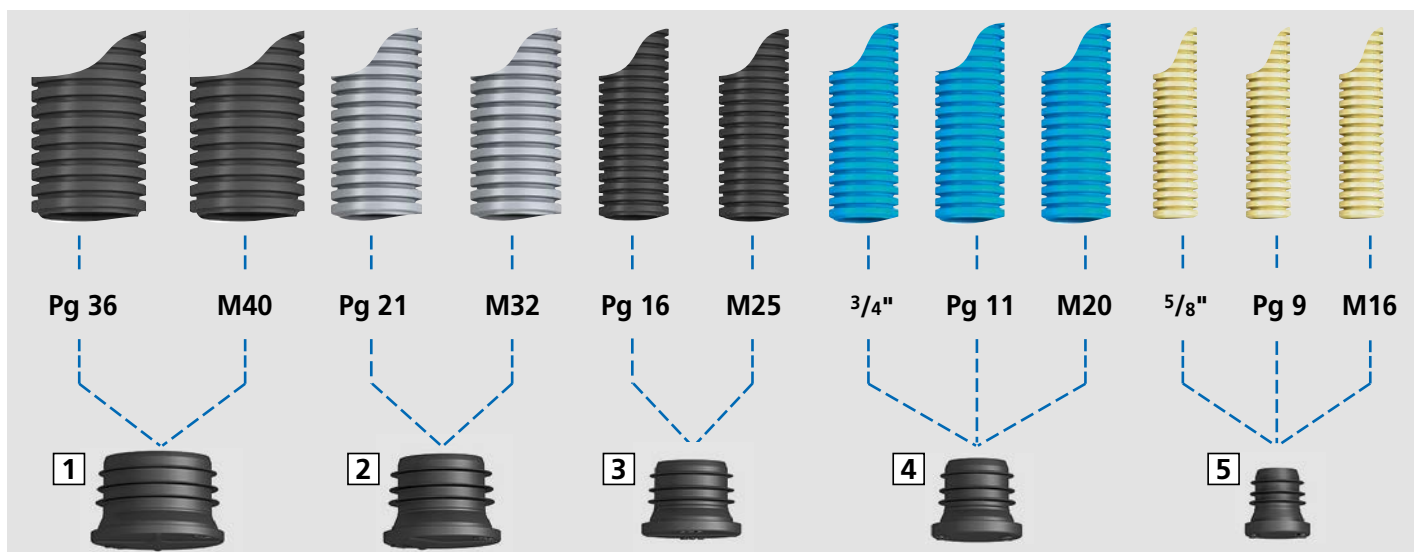


When air-tight installation is necessary, the sealing plugs prevent leakage at the conduit ends.



For installations in the field of fire protection, the sealing plug closes the conduit ends and ensures smoke-tight room separation.

### Assignment of conduit sizes and sealing plugs



**1** Sealing plug M40 Art. No. 1040-40 | **2** Sealing plug M32 Art. No. 1040-32 | **3** Sealing plug M25 Art. No. 1040-25 | **4** Sealing plug M20 Art. No. 1040-20 | **5** Sealing plug M16 Art. No. 1040-16

## Sealing plugs 16-20

- for sealing electrical installation conduits
- ECON® technology for easy cable entry
- permanently flexible plastic



3D animation

Sealing plug	M16	M20
DIN EN conduit Ø	16 mm	20 mm
Halogen-free	Yes	Yes
<b>Art.-No.</b>	<b>1040-16</b>	<b>1040-20</b>
Inner packaging/shipping	25 / 100	25 / 100

## Sealing plugs 25-40

- for sealing electrical installation conduits
- ECON® technology for easy cable entry
- permanently flexible plastic




3D animation

Sealing plug	M25	M32	M40
DIN EN conduit Ø	25 mm	32 mm	40 mm
Halogen-free	Yes	Yes	Yes
<b>Art.-No.</b>	<b>1040-25</b>	<b>1040-32</b>	<b>1040-40</b>
Inner packaging/shipping	25 / 100	25 / 50	- / 25

## Two-gang junction box

- can also be used as a one-gang junction box (incl. 2 device inserts)
- for use as a junction box cover Art. no. 9062-90 is additionally needed
- use separator wall to separate electrical circuits Art. No. 1656-22 (not illustrated)
- dimensions in accordance with German DIN 49073



Length x Width x Depth	140 x 60 x 42 mm	140 x 60 x 42 mm
Conduit entries M20	12	12
Combination distance	71 mm	71 mm
Halogen-free	Yes	Yes
Device screws	-	4
	Yes	Yes
<b>Art.-No.</b>	<b>1655-02</b>	<b>1656-02</b>
Inner packaging/shipping	10 / 100	10 / 100


# One-gang boxes, One-gang junction boxes

for flush-mounting installation

## One-gang box

- with nail straps as fitting aid
- nail Ø max. 3 mm
- plaster depth min. 6 mm
- dimensions in accordance with German DIN 49073
- for M20 conduits




Depth	42 mm	42 mm
Screw spacing	60 mm	60 mm
Conduit entries M20	7	7
Halogen-free	Yes	Yes
Device screws	-	2
	Yes	Yes
<b>Art.-No.</b>	<b>1055-62</b>	<b>1056-62</b>
Inner packaging/shipping	- / 100	- / 100

## Cavity wall one-gang junction box

- with nail straps as fitting aid
- nail Ø max. 3 mm
- plaster depth min. 6 mm
- dimensions in accordance with German DIN 49073
- for M20 conduits




Depth	63 mm	63 mm
Screw spacing	60 mm	60 mm
Conduit entries M20	13	13
Halogen-free	Yes	Yes
Device screws	-	2
	Yes	Yes
<b>Art.-No.</b>	<b>1555-62</b>	<b>1556-62</b>
Inner packaging/shipping	- / 100	- / 100

## One-gang box without support

- for use in facing masonry
- for combinations: use supports Art. No. 1159-01
- dimensions in accordance with German DIN 49073
- for M20 conduits




Depth	42 mm	42 mm
Screw spacing	60 mm	60 mm
Conduit entries M20	7	7
Halogen-free	Yes	Yes
Device screws	-	2
	Yes	Yes
<b>Art.-No.</b>	<b>1050-00</b>	<b>1051-00</b>
Inner packaging/shipping	25 / 500	25 / 500

## One-gang junction box without support

- for use in facing masonry
- for combinations: use supports  
Art. No. 1159-01
- dimensions in accordance with German DIN 49073
- for M20 conduits



<b>Depth</b>	<b>63 mm</b>	<b>63 mm</b>
Screw spacing	60 mm	60 mm
Conduit entries M20	13	13
Halogen-free	Yes	Yes
Device screws	-	2
	Yes	Yes
<b>Art.-No.</b>	<b>1550-00</b>	<b>1551-00</b>
Inner packaging/shipping	25 / 250	25 / 250

## One-gang box PERILEX®

- for PERILEX® 16 A inserts
- only for screw fixing
- dimensions in accordance with German DIN 49073
- for M20 conduits



<b>Depth</b>	<b>48 mm</b>
Screw spacing	67 mm
Device screws	2
Conduit entries M20	8
Halogen-free	Yes
<b>Art.-No.</b>	<b>1076-04</b>
Inner packaging/shipping	10 / 100

## One-gang box CEE

- for CEE 16 A connectors
- only for screw fixing
- with sealing ring, protection class IP3X
- dimensions in accordance with German DIN 49073
- For M20/M25 conduits and cables



<b>Depth</b>	<b>50 mm</b>
Screw spacing	67 mm
Raised head accessory screws 4 mm	Yes
Conduit entries M20	2
Conduit entries M25	2
Halogen-free	Yes
	Yes
<b>Art.-No.</b>	<b>1075-04</b>
Inner packaging/shipping	- / 100

# Junction boxes

## for flush-mounting installation

### Junction box

- with nail straps as fitting aid
- nail Ø max. 3 mm
- plaster depth min. 6 mm
- without cover and cover screws
- dimensions in accordance with German DIN 49073
- for M20 conduits




<b>Depth</b>	<b>36 mm</b>
Screw spacing	67 mm
Conduit entries M20	8
For 6 terminals 1.5 mm <sup>2</sup> or 5 terminals 2.5 mm <sup>2</sup>	Yes
Halogen-free	Yes
	Yes
<b>Art.-No.</b>	<b>1172-62</b>
Inner packaging/shipping	- / 100

### Junction box

- KLEMMFIX® mounting possible
- according to German DIN VDE 0606, junction box covers may only be removable using tools
- dimensions in accordance with German DIN 49073
- for M20 conduits




<b>Depth</b>	<b>36 mm</b>	<b>36 mm</b>
Screw spacing	67 mm	67 mm
Conduit entries M20	8	8
For 6 terminals 1.5 mm <sup>2</sup> or 5 terminals 2.5 mm <sup>2</sup>	Yes	Yes
For mounting with Klemmfix® (Art. No. 1159-12)	Yes	Yes
Halogen-free	Yes	Yes
With cover and 2 cover screws	-	Yes
	-	Yes
<b>Art.-No.</b>	<b>1172-02</b>	<b>1172-92</b>
Inner packaging/shipping	25 / 500	25 / 250



## Junction box

- with plaster disc, cover and cover screw
- KLEMMFIX® mounting possible
- For M20 conduits and cables up to 5 x 2.5 mm<sup>2</sup>




<b>Depth</b>	<b>36 mm</b>
Screw spacing	67 mm
Conduit entries M20	8
For 6 terminals 1.5 mm <sup>2</sup> or 5 terminals 2.5 mm <sup>2</sup>	Yes
without terminal block	Yes
Halogen-free	Yes
	Yes
<b>Art.-No.</b>	<b>1172-09</b>
Inner packaging/shipping	25 / 100

## Junction box

- for 8 terminals 1.5 mm<sup>2</sup>, for 6 terminals 2.5 mm<sup>2</sup> or for 5 terminals 4 mm<sup>2</sup>
- without cover and cover screws
- For M16/M20 conduits




<b>Depth</b>	<b>56 mm</b>
Screw spacing	67 mm
M16-20 combination conduit entry	14
Halogen-free	Yes
	Yes
<b>Art.-No.</b>	<b>1572-02</b>
Inner packaging/shipping	10 / 250

## In-plaster junction box

- for flat multi-lead wiring (NYIF) 1.5 and 2.5 mm<sup>2</sup>
- terminal block permanently attached
- with plaster disc, cover and cover screw
- Junction box fire-resistant up to 960°C, cover to 850°C in accordance with DIN EN 60670




<b>Depth</b>	<b>16 mm</b>
Screw spacing	80 mm
Terminal block, no. of poles	5
Halogen-free	Yes
	Yes
<b>Art.-No.</b>	<b>1081-05</b>
Inner packaging/shipping	25 / 250

# Light connection boxes, Ceiling exits for flush-mounting installation

## Wall light connection box

- With integrated cover
- not to be used as a junction box!



<b>Length x Width x Depth</b>	<b>60 x 32 x 30 mm</b>
Break-out openings Ø 20 mm	4
Halogen-free	Yes
	Yes
<b>Art.-No.</b>	<b>1048-00</b>
Inner packaging/shipping	25 / 250

## Cover

- for wall light connection boxes  
Art. No. 1048-00 and Art. No. 9148-00
- With Ø 3.2 x 15 mm cover screws



<b>Length x Width</b>	<b>75 x 40 mm</b>
Halogen-free	Yes
<b>Art.-No.</b>	<b>1148-90</b>
Inner packaging/shipping	25 / 250

## Luminaire connection box

- for casting into concrete ceilings
- 2 parts with snap-in connection
- sealed against concrete
- delivery unit: 1 ceiling light connection box pre-cut for DIN EN conduits 20 mm Ø, 2 reducers/stoppers for use with cable, 1 sealing plug-in cover, 1 light hook (fully-insulated) max. load 100 N (10 kg) in accordance with German VDE
- Marking for cables and DIN EN conduits up to 25 mm



<b>Depth</b>	<b>55 mm</b>
Ceiling exit (CE) Ø	35 mm
Light hook length	55 mm
Conduit entries M20	1
Halogen-free	Yes
	Yes
<b>Art.-No.</b>	<b>1248-55</b>
Inner packaging/shipping	1 / 100

## Ceiling exit bush

- for multi-lead wiring (NYIF) 1.5 mm<sup>2</sup> and 2.5 mm<sup>2</sup>
- to prevent cable being ripped out



<b>Cable entry</b>	<b>5,5 x 23 mm</b>	<b>5,5 x 23 mm</b>
Halogen-free	Yes	Yes
With light hook and expanding dowel Ø 10 mm	-	Yes
with brass wedge nut, max. load 100 N (10kg) to German VDE norm	-	Yes
<b>Art.-No.</b>	<b>1144-00</b>	<b>1144-05</b>
Inner packaging/shipping	100 / 500	50 / 250

## Flush-mounting sound insulation one-gang junction box

Sound insulation box for use in solid construction sound insulation walls with stringent sound insulation requirements. The solid box body with additional sound insulation coating absorbs and reflects the sound, so that interference in adjacent rooms is excluded and the sound insulation remains intact as if no installation box were present.

- Maintains the wall's sound insulation protection
- Installation up to 5-unit combinations
- Opposing installation is also possible
- Variable combination connection piece for conduits up to M25
- Flexible for screw and claw fixing of the accessories
- Can be used with sound protection cover as a junction box



### Examples of use



Example of installation using a switch-socket combination.



Use of an opposing sound insulation box.



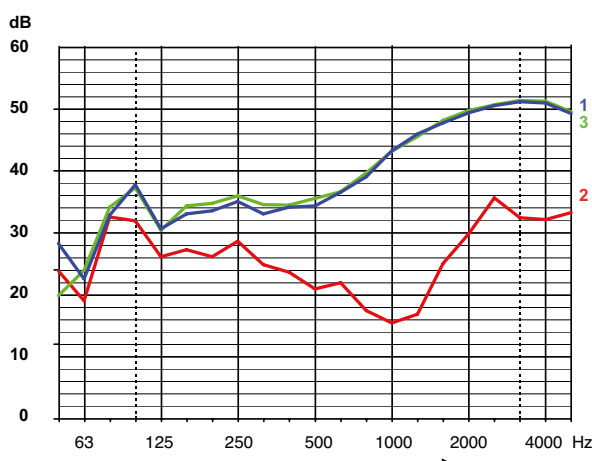
Use of an opposing sound insulation box.



With sound insulation cover it can also be used as junction box.

### Comparison of sound insulation

Solid wall 11.5 cm and 17.5 cm with 10 mm plaster on both sides.



1 Wall, without installations, 52 dB | 2 with one-gang junction box 1555-04, 32 dB | 3 with one-gang junction box 1569-01, 52 dB | 4 Wall, without installations, 56 dB | 5 with one-gang junction box 1555-04, 41 dB | 6 with one-gang junction box type 1569-01, 56 dB

# One-gang boxes, One-gang junction boxes

for flush-mounting installation

## Installation



Cut a Ø 82 mm installation opening using a grinding head (e.g. Art. No. 1088-15).



Make exact cable and conduit entries with the universal opening cutter (Art. No. 1085-80).



For combinations, the one-gang junction boxes are snapped together.



The sound insulation box is simply fixed with plaster.



Combinations at a standard spacing of 71 mm.



Soundproof and fully insulated through wiring is ensured by the support connectors.

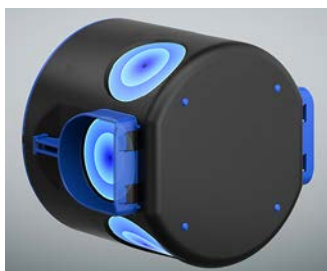


Example of installation using a switch-socket combination.



With the sound insulation cover (Art. No. 1184-69), the box can also be used as junction box.

## Processing instructions



The flush-mounting sound insulation box offers 6 possible entries for conduits up to M25 and cables up to Ø 11.5 mm.



The support connector makes it easier to feed conduits up to M25 in the connection area.



In opposing installation, the sound insulation is guaranteed up to a five-way combination.

## Allocation table for universal opening cutters



Flush-Mounting installation for sound insulation boxes		Ø setting
<b>NYM cable</b>	3 x 1.5 mm <sup>2</sup>	7.5
	4 x 1.5 mm <sup>2</sup>	8.5
	5 x 1.5 mm <sup>2</sup> ; 3 x 2.5 mm <sup>2</sup>	9.5
	7 x 1.5 mm <sup>2</sup> ; 5 x 2.5 mm <sup>2</sup>	10.5
<b>Low-voltage cables</b>	Integrated high voltage and MSR-Bus cable (N)Y(YSt)Y)M-J	10.5
	3 x 1.5 mm <sup>2</sup>	
	EDV cable, S/STP 4 x 2 AWG23/1	7.5
	EDV cable, 100 MB S/STP 4 x 2 x AWG23/1	6.0
	Coaxial cable, double screening	6.0
	Coaxial cable, single screening	5.0
	Bus cable YCYM 2 x 2 x 0.8	5.0
	EDV cable screened, plus outer screening	5.0
	Cable for telephone and signal transmission with screening	4.0
<b>Support connector</b>	9060-98	Connector
<b>Conduits according to DIN EN 60423 flexible (curled)</b>	DIN EN 16 - Ø 16 mm	14.0
	DIN EN 20 - Ø 20 mm	17.0
	DIN EN 25 - Ø 25 mm	21.0

You can create cable entries with the prescribed strain relief easily and to the exact required size with the universal opening cutter (Art No. 1085-80).

## Flush-mounting sound insulation one-gang junction box

INNOVATION



3D animation



Product-Data

- with 4 screw domes and 2 expanding claw fields
- One-gang junction box for solid construction sound insulation walls
- For conduits up to M25 and cables up to Ø 11.5 mm
- Combination distance: 71 mm




<b>Depth</b>	<b>60 mm</b>
Screw spacing	60 mm
Number of screw domes	4
Splayed claw fields	2
Tube entries up to M25	6
Cable entries of up to Ø 11.5 mm	6
for sound insulation walls up to	56 dB
Halogen-free	Yes
<b>Art.-No.</b>	<b>1569-01</b>
Inner packaging/shipping	10 / 100

## Sound insulation cover

- for sound insulation box
- Sound insulation function in conjunction with sound insulation box



<b>Diameter</b>	<b>92 mm</b>
Halogen-free	Yes
	Yes
<b>Art.-No.</b>	<b>1184-69</b>
Inner packaging/shipping	10 / 100



## Screened one-gang junction box



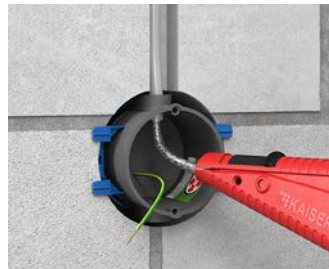
Screened one-gang junction box for flush-mounting installation. The conductive coating suppresses interference with a high alternating field component, whether radiated or received.

- For environmentally-safe electrical installation
- With screening and potential conductivity
- The functional earth of the box must only be connected to the potential equalisation and not to the equipment grounding conductor (PE conductor)

### Installation



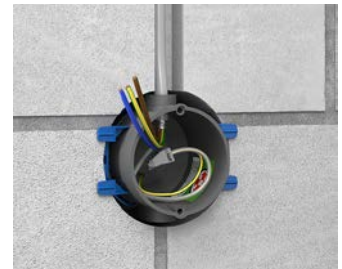
Cut an accurate wall opening (Ø 82 mm) with the diamond grinding head.



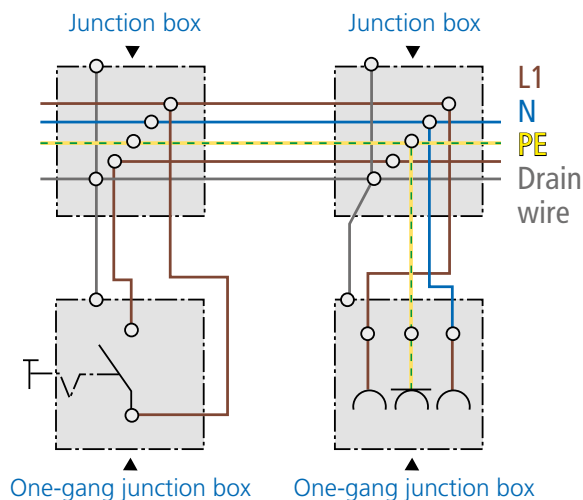
Remove cable sheath and screen with AMZ 2 (Art. No. 1190-02). Fit bare tracer wire with transparent insulating hose.



Connect functional earth of the box to tracer wires of screened cable.



One-gang junction box is ready for installation of a socket for biological design.



### Technical processing instructions/standards

- dimensions in accordance with German DIN 49073
- for rooms used for medical purposes, environmentally-friendly construction, etc.
- the conductive coating suppresses interference with a high alternating field component, whether radiated or received
- The functional earth of the box must only be connected to the potential equalisation and not to the equipment grounding conductor (PE conductor)
- Not suitable for use in X-ray or radiation rooms!

## Screened one-gang junction box

- with screening and functional earth of the box
- dimensions in accordance with German DIN 49073
- protection class IP 2X



<b>Depth</b>	<b>63 mm</b>
Screw spacing	60 mm
Cable entries 3 x 2.5 mm <sup>2</sup> or 5 x 1.5 mm <sup>2</sup>	6
Cable entries 3 x 1.5 mm <sup>2</sup>	4
Halogen-free	Yes
<b>Art.-No.</b>	<b>1555-88</b>
Inner packaging/shipping	10 / 100

## Screened cover

- for making screened one-gang junction boxes
- for one-gang junction boxes Art. No. 9064-88 and Art. No. 1555-88



<b>Diameter</b>	<b>80 mm</b>
Screw spacing	60 mm
<b>Art.-No.</b>	<b>1164-88</b>
Inner packaging/shipping	10 / 100

## Screened junction casing

- for cavity wall and flush-mounting installation
- with screened cover
- With Ø 3.2 x 15 mm cover screws
- Protection class IP 3X



<b>Length x Width x Depth</b>	<b>107 x 107 x 53 mm</b>
Cut hole Ø	4 x 35 mm
Break-out openings Ø 20 mm	8
Cable entries for NYM and low-voltage cabling	Yes
For terminals up to	4 mm <sup>2</sup>
<b>Art.-No.</b>	<b>9195-88</b>
Inner packaging/shipping	1 / 10

## Note

Other installation boxes/housings with screening available on request. Please use our radiation protection box in X-ray areas or areas with ionising radiation.