

Cavity wall installation



Cavity wall basis installation

- Complete system for all cavity wall applications
- FX quick-assembly technology FX⁴ for time-saving installation
- Universal installation housing with mineral fibreboard for all common unit sizes (e.g. displays, LED luminaires, etc.)
- Halogen-free product range



Air-tight cavity wall installation

- Air-tight installation as per GEG
- ECON[®] technology for air-tight, toolless cable and conduit entries
- Air-tight sleeves for the air-tight feed-through of cables and conduits
- ECON[®] Fix: rib fastening in different wall material combinations without lugs
- ECON[®] Data for the connection and installation of data and network cables



Special cavity wall solutions










- HWD fire-protection boxes for **fire-protection walls** and ceilings, as well as shipbuilding walls
- Safe, visible and certified protection without filling and lubrication through the use of KAISER bulkhead systems for cables and conduits
- Sound insulation boxes for insertion into **sound insulation walls**
- Radiation protection one-gang boxes for insertion into leaded and lead-free **radiation-protection walls**
- Clean room boxes for use in clean rooms in a medical environment or in hygienic areas
- Damp room boxes for professional installation in sealed interior rooms
- International products for accessory installation according to national standards



see chapter **TOOLS**
from page 376

Tools

- Professional system tools for fast, safe installation
- Extensive system accessories

	Basis installation	Air-tight	Clean room	Sound insulation	Radiation protection	Shielded Environmentally-friendly construction	Damp room	Solid wood	Fire protection
									
For installation accessories									see chapter FIRE PROTECTION
One-gang boxes	pg. 88	pg. 99	-	-	-	-	-	-	pg. 285
One-gang junction boxes	pg. 88	pg. 99	pg. 137	pg. 131	pg. 138	pg. 142	pg. 145	-	pg. 285
One gang boxes for thin boarding	pg. 91	-	-	-	-	-	-	-	-
One-gang junction boxes for thin boarding	pg. 92	-	-	-	-	-	-	-	-
One-gang junction boxes for solid wood	pg. 113	pg. 107	-	-	-	-	-	pg. 119	pg. 287
Two-gang junction boxes	pg. 89	-	-	-	-	-	-	-	-
Electronics boxes	pg. 93/114	pg. 93/114/109/110	-	pg. 132/135	-	-	-	-	pg. 283
Perilex one-gang boxes	pg. 90	-	-	-	-	-	-	-	-
CEE one-gang boxes	pg. 90	pg. 113	-	-	-	-	-	-	-
Universal installation housings	pg. 151	-	-	-	-	-	-	-	-
Versions									
available halogen-free	•	•	-	•	•	-	-	-	•
For cable outlets									
Wall light connection boxes	pg. 94	pg. 94/114	-	-	-	-	-	-	-
Luminaire connection boxes	pg. 95	-	-	-	-	-	-	-	-
For cable entries									
Sealing sleeves	-	pg. 122	-	-	-	-	-	-	-
Sealings	-	-	-	-	-	-	-	-	-
For cable connections									
Junction boxes	pg. 90 / 148	-	-	-	-	-	-	-	-
Junction casings	pg. 147	-	-	-	-	pg. 43/143	-	-	-
Potential equalisation casing	pg. 149	-	-	-	-	-	-	-	-
Accessories									
Fixing	pg. 146	pg. 146	pg. 146	pg. 146	-	pg. 146	pg. 146	pg. 146	pg. 146
Subsequent sealing (air-tight)	pg. 31/116	-	-	-	-	-	-	-	-
Sealing of electrical installation conduits (air-tight and smokeproof)	-	pg. 33/117/302	-	-	-	-	-	pg. 33/117/302	pg. 33/117/302
Plaster compensation	pg. 96	pg. 96	-	-	-	-	-	-	-
Support connector	pg. 96/114	pg. 96/114	-	pg. 57/131/141	pg. 139	-	-	pg. 57/131/141	pg. 285
End cover	pg. 149	pg. 149	-	pg. 41/131	-	pg. 43/143	-	-	pg. 289

FLUSH-MOUNTING

CAVITY WALL

CONCRETE

HOUSINGS

FIRE PROTECTION

PLUGGABLE

CONNECTIVITY

CABLE GLANDS

TOOLS

SERVICE



Plus-minus device screw

The screw allows the installer to fit screws and devices screws with the same screwdriver. In addition, the new screw drive can be used with many other components, e. g. switches, sockets, terminal blocks etc. Optimal shape for +/- or PZ1 screwdrivers, and at the same time a slot screwdriver up to max. 4mm width can be used. A closed long-slot ensures that the blade does not slip out.

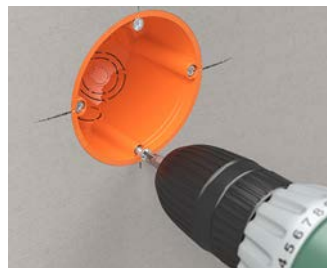
Processing instructions



Device screw with extra-flat countersunk head for low installation height.



Combination drive Pozidriv 1/ slot provides the best grip.



Suitable for fitting using cordless screwdriver.



Optimal for fitting with +/- screwdriver.



FX⁴ technology - the fastest means of screw attachment

FX⁴ technology provides the fastest-ever screw fixing for cavity wall boxes and installation housings. The special thread shape enables up to 40% quicker mounting with simultaneous high self-locking effect.

- 40% quicker mounting
- High self-locking effect
- In cavity wall boxes and installation housings

Processing instructions

The screws with the steep thread design and the 3-part thread reduce installation time by up to 40%.



Standard screw.



KAISER standard.



Example of use for universal housing.



Example of use of EnoX®.

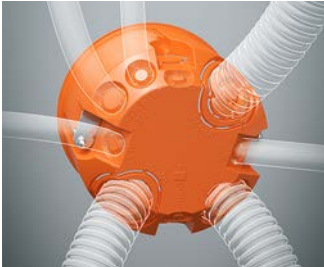
Cavity wall installation boxes

The new KAISER cavity wall installation boxes with proven mounting lug technology and improved product features. A practical design and a large selection of cable and conduit entries allow a large number of applications. Additional boxes for installation in thinly boarded walls or solid wood walls complete the wide range. VDE certification documents the high level of quality.

- Screws ensure permanent fixing
- Entries can be broken out for cables and conduits
- Combinable and through-wiring by using support connectors
- Fixing of devices by means of pre-mounted device screws



Processing instructions



New boxes provide a large number of entry options.



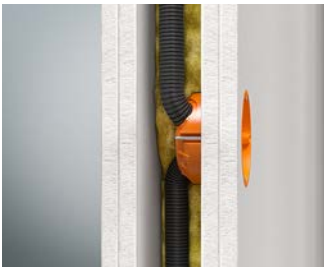
Marking of the openings simplifies the assignment of the correct diameter.



Combination entry for cable and conduits up to max. Ø 25 mm.



Specific openings can be made simply by breaking out.



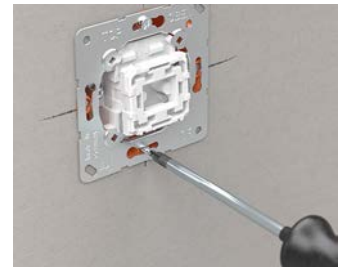
Bending of the conduit up to 90° is easily possible in the case of slim wall constructions or in the installation level.



Cable and conduit retention prevents slipping-out of live parts.



Standardised round support connector for fast installation.



Easy-to-fit device fixing thanks to new +/- screw.

Technical processing instructions / Standards

- in accordance with DIN EN 60670
- Standardised combination distance 71 mm
- fully-insulated through-wiring in combinations of one-gang boxes and one-gang junction boxes for switches and sockets possible
- with holding ring
- break-out openings for sheathed cabling, low-voltage wires and DIN EN conduits
- integrated retention of NYM cables in accordance with DIN 60670/DIN 49073, self-locking of the conduits
- can also be used as junction box in accordance with DIN EN 60670

One-gang boxes, one-gang junction boxes, accessories



for cavity wall installation

O-range® one-gang box

· with holding ring



3D animation

Depth	49 mm	49 mm
For panel thickness	7 - 40 mm	7 - 40 mm
Cut hole Ø	68 mm	68 mm
Device screws +/-	2	2
Ø 20 / 25 mm combination entries	2	2
Cable entries 3 x 2.5 mm ² or 5 x 1.5 mm ²	2	2
Cable entries 3 x 1.5 mm ²	2	2
Cable entries for low voltages	2	2
Support connectors for each package	7	7
Halogen-free	-	Yes
 / 	Yes / Yes	Yes / Yes
Art.-No.	9063-02	9063-78
Inner packaging/shipping	25 / 250	25 / 250



Accessories: Support connector, air tight, Page 96/114

O-range® one-gang junction box

· with holding ring



3D animation

Depth	62 mm	62 mm
For panel thickness	7 - 40 mm	7 - 40 mm
Cut hole Ø	68 mm	68 mm
Device screws +/-	2	2
Conduit entries Ø 20 mm	1	1
Ø 20 / 25 mm combination entries	2	2
Cable entries 3 x 2.5 mm ² or 5 x 1.5 mm ²	3	3
Cable entries 5 x 2.5 mm ² or 7 x 1.5 mm ²	1	1
Cable entries 3 x 1.5 mm ²	3	3
Cable entries for low voltages	2	2
Support connectors for each package	7	7
Halogen-free	-	Yes
 / 	Yes / Yes	Yes / Yes
Art.-No.	9064-02	9064-78
Inner packaging/shipping	25 / 250	25 / 250

Accessories: Support connector, air tight, Page 96/114

One-gang box

- with holding ring





Depth	35 mm	35 mm
Cut hole Ø	68 mm	68 mm
For panel thickness	7 - 28 mm	7 - 28 mm
Device screws +/-	2	2
Cable entries 3 x 1.5 mm ²	4	4
Halogen-free	-	Yes
Art.-No.	9061-00	9061-77
Inner packaging/shipping	25 / 250	25 / 250

Two-gang junction box

- for 2 electrical inserts or 1 block insert
- with cover (Art. No. 9062-90), for use as a junction box
- use separator wall to separate electrical circuits Art. No. 9062-22
- with holding ring



Depth	47 mm	47 mm
For panel thickness	7 - 40 mm	7 - 40 mm
Cut hole Ø	2 x 68 mm	2 x 68 mm
Device screws +/-	4	4
Centre distance	71 mm	71 mm
Conduit entries Ø 20 mm	6	6
Cable entries 3 x 2.5 mm ² or 5 x 1.5 mm ²	2	2
Cable entries 3 x 1.5 mm ²	4	4
Halogen-free	-	Yes
 / 	Yes / Yes	Yes
Art.-No.	9062-02	9062-77
Inner packaging/shipping	10 / 100	10 / 100

Accessories: Support connector, air tight, Page 96/114 ; Connecting clip for stacking boxes 9062-02/-77, Page 94

Replacement cover

- for junction box Art. No. 9062-02



Length x Width	145 x 75 mm
Art.-No.	9062-90
Inner packaging/shipping	10 / -

One-gang boxes, one-gang junction boxes, accessories

for cavity wall installation

PERILEX® / CEE One-gang box

- with holding ring
- for device inserts 16 A




Depth	50 mm	50 mm	50 mm	50 mm
For panel thickness	12,5 - 40 mm	12,5 - 40 mm	12,5 - 40 mm	12,5 - 40 mm
Cut hole Ø	74 mm	74 mm	74 mm	74 mm
Screw spacing	67 mm	67 mm	67 mm	67 mm
with 2 countersunk device screws 4 mm Ø, 16 mm in length to facilitate use of 16 A PERILEX inserts	Yes	Yes	-	-
Halogen-free	-	Yes	-	Yes
With sealing ring for protection class IP 34 and 2 raised head 4 mm Ø device screws, length 20 mm, for use with 16 A CEE equipment inserts	-	-	Yes	Yes
 / 	Yes / Yes	Yes	Yes	Yes
Art.-No.	9067-01	9067-77	9075-01	9075-77
Inner packaging/shipping	10 / 100	10 / 100	10 / 100	10 / 100

Junction box

- with universal VDE cover Art. No. 1184-90
- with holding ring
- with 2 Ø 4 x 16 mm countersunk head screws



Depth	50 mm	50 mm
For panel thickness	12,5 - 40 mm	12,5 - 40 mm
Cut hole Ø	74 mm	74 mm
Screw spacing	67 mm	67 mm
Halogen-free	-	Yes
	Yes	Yes
Art.-No.	9071-01	9071-77
Inner packaging/shipping	10 / 100	10 / 100

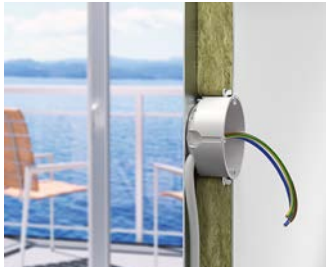
O-range® one-gang box for thin boardings

A new one-gang box is now available in the O-range® programme for walls with thin boarding or small cavity: thanks to its installation depth of just 35 mm and the zero clamping technology, which ensures a permanently firm hold, it is particularly suitable for walls with little space or thin wall thickness.

- With zero tension technology for thin boarding
- Low installation depth of 35 mm
- Cable entries with integrated cable retention
- Device screws with flat countersunk head
- For cables up to Ø 11.5 mm



Application examples



The box is particularly suitable for walls with limited space or thin wall thickness.



In addition, the use in container...



...or shipbuilding possible.




The special zero clamping technology for a clamping range of 0.2 to 30 mm ensures a permanently firm hold.

O-range® one-gang box for thin boardings

- for walls with a small cavity from 35 mm
- for thin boarding
- can be combined with each other



Depth	35 mm	35 mm
For panel thickness	0,2 - 30 mm	0,2 - 30 mm
Cut hole Ø	68 mm	68 mm
Device screws +/-	2	2
Cable entries Ø 4 up to 11.5 mm	6	6
Support connectors for each package	5	5
Halogen-free	-	Yes
	Yes	Yes
Art.-No.	9061-01	9061-78
Inner packaging/shipping	25 / 250	25 / 250


One-gang boxes, one-gang junction boxes, accessories

for cavity wall installation

One-gang box for thin boardings

- for boardings that do not permit any countersinking
- with thin holding ring
- Protection class IP 3X





Depth	41 mm	41 mm
For panel thickness	0,2 - 40 mm	0,2 - 40 mm
Cut hole Ø	68 mm	68 mm
Device screws	2	2
Conduit entries Ø 20 mm	2	2
Cable entries 3 x 1.5 mm ²	4	4
Halogen-free	-	Yes
	Yes	Yes
Art.-No.	9068-04	9068-74
Inner packaging/shipping	25 / 250	25 / 250

One-gang junction box for thin boardings

- for boarding that does not permit countersinking (e.g. metal-covered boarding)
- with thin holding ring



Depth	61 mm	61 mm
For panel thickness	0,2 - 40 mm	0,2 - 40 mm
Cut hole Ø	68 mm	68 mm
Device screws	2	2
Conduit entries Ø 20 mm	4	4
Cable entries 3 x 1.5 mm ²	4	4
Cable entries 3 x 2.5 mm ² or 5 x 1.5 mm ²	2	2
Cable entries for low voltages	2	2
Halogen-free	-	Yes
 / 	Yes / Yes	Yes / Yes
Art.-No.	9068-03	9068-76
Inner packaging/shipping	25 / 250	25 / 250

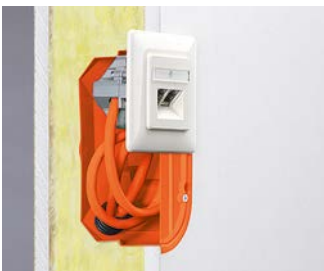
Electronics box

Cavity wall electronics box for switching units, electronic components, cables and terminals in cavity walls. The box can be subdivided and combined, so it offers a wide range of usage options.

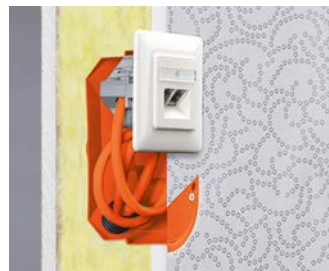
- For different voltage types by using the associated separator wall
- Integrating radio or EIB actuators
- With a cover that can be wallpapered and filled
- Can be combined with each other as well as with one-gang boxes and one-gang junction boxes



Application examples



The cover can be fitted flush with the wall for wallpapering over...



...or turned 180° for filling. This will reduce any possible switching sounds.



Network connection boxes can be used while maintaining the cable bending radii and with the best possible data transfer speeds.



The electronics box offers a generous installation space for the decentralised installation of small window actuators for controlling blinds and heating, for example.

Electronics box

- air-tight version with additional sealing lip
- Tunnel twin-chamber box with enclosed separator wall and cover that can be wallpapered over.
- for accessory inserts and electronic components, such as EIB actuators, communication technology, radio control elements, alarm modules, etc.
- with holding ring



Depth	75 mm	75 mm
Centre distance	71 mm	71 mm
Cut hole Ø	2 x 68 mm	2 x 68 mm
Air-tight	Yes	Yes
Halogen-free	-	Yes
	Yes	Yes
Art.-No.	9062-94	9062-74
Inner packaging/shipping	10 / 100	10 / 100

One-gang boxes, one-gang junction boxes, accessories

for cavity wall installation

Connecting clip for stacking boxes

- for horizontal combination of two-gang junction boxes 9062-02 or electronics boxes 9062-94





Art.-No.	9062-50
Inner packaging/shipping	10 / -

Wall light connection box

- with inner fitting cover
- not to be used as a junction box!
- with holding ring



Depth	40 mm	45 mm	45 mm
Cut hole Ø	2 x 35 mm	35 mm	35 mm
For panel thickness	7 - 30 mm	7 - 40 mm	7 - 40 mm
Conduit entries Ø 20 mm	1	-	-
Cable entries 3 x 1.5 mm ²	2	1	1
Centre distance	30 mm	-	-
If necessary use screw cover 1148-90	Yes	-	-
Air-tight	-	Yes	Yes
Halogen-free	-	-	Yes
 / 	Yes / Yes	-	-
Art.-No.	9148-00	9248-01	9248-77
Inner packaging/shipping	25 / 100	25 / 100	25 / 100

Cover

- for wall light connection boxes Art. No. 1048-00 and Art. No. 9148-00
- With Ø 3.2 x 15 mm cover screws




Length x Width	75 x 40 mm
Halogen-free	Yes
Art.-No.	1148-90
Inner packaging/shipping	25 / 250

Luminaire connection box

- with M5 metal thread for light hooks
min. length 55 mm
- maximum load 20 N (2 kg)
- can also be used as ceiling light
junction box
- with holding ring
- Important! Always screw in light hook
fully.



Depth	47 mm
For panel thickness	7 - 40 mm
Cut hole Ø	68 mm
Conduit entries Ø 20 mm	2
Cable entries 3 x 2.5 mm ² or 5 x 1.5 mm ²	2
Cable entries 3 x 1.5 mm ²	2
	Yes
Art.-No.	9063-50
Inner packaging/shipping	- / 10

Hook screw with M5 thread

- Proof voltage: 2500 V tested
- For retrofitting in ceiling boxes (EN
60670)
- with M5 thread, fully insulated



Length of shank	55 mm	65 mm
Diameter hook	26 mm	26 mm
Overall length	81 mm	91 mm
Thread length	10 mm	10 mm
Art.-No.	1226-55	1226-65
Inner packaging/shipping	- / 150	- / 150

One-gang boxes, one-gang junction boxes, accessories

for cavity wall installation

Plaster compensation rings

- to compensate for deep-seated boxes
- plaster compensation rings with same diameter can be stacked
- with 2 screws for attaching equipment and 2 ring attachment screws



Height	10 mm	20 mm	12 mm	24 mm
Screw spacing	60 mm	60 mm	67 mm	67 mm
for boxes with an outer Ø	68 mm	68 mm	74 mm	74 mm
Art.-No.	9155-61	9155-62	9155-71	9155-72
Inner packaging/shipping	25 / 250	25 / 250	10 / 100	- / 100

Support connector

- For fully insulated through-wiring in combinations
- to make air-tight combinations
- for Art. Nos. 9066-01/12, 9068-01, 9263-..., 9264-..., 9062-02/-77, 9062-94/-74, 9268-94/-74, 9266-22/-77



Halogen-free	-	Yes
Art.-No.	9060-98	9060-78
Inner packaging/shipping	25 / 100	25 / 100

Support connector

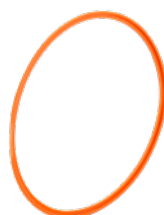
- for through-wiring of combinations to IP 30 standard
- for all boxes with a trapezoidal support connector opening



Halogen-free	-	Yes
Art.-No.	9060-97	9060-77
Inner packaging/shipping	50 / 250	50 / 50

Compensation ring up to max. Ø 71 mm

- for all Ø 68 mm cavity wall boxes
- for oversize drill holes
- can also be used for combinations where the formed surfaces are located next to each other



Compensation ring from Ø 74 mm to Ø 68 mm

- for all Ø 68 mm cavity wall boxes
- for oversize drill holes
- can also be used for combinations where the formed surfaces are located next to each other



Compensation up to max. Ø 71 mm	Yes	-
Compensation from Ø 74 mm to Ø 68 mm	-	Yes
Art.-No.	9060-40	9060-42
Inner packaging/shipping	25 / 250	25 / 250