

Concrete construction (precast concrete)



System magnets

- The new standard in automated precast concrete
- More efficient production processes
- For a completely prefabricated electrical installation



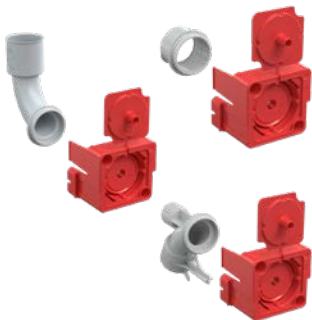
B² one-gang junction boxes

- For magnetic and adhesive attachments
- Versions in depths of 48.5 mm, 68.5 mm and 83.5 mm
- Connection options for conduits with Ø 20 mm, Ø 25 mm, Ø 32 mm and Ø 40 mm
- 1-piece item design for quick insertion



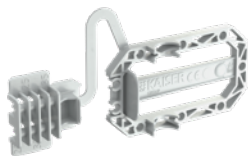
Ceiling box

- For magnetic and adhesive attachments
- Versions in depths of 105 mm and 115 mm
- Connection options for conduits from Ø 20 mm to Ø 40 mm
- For optimum transport conditions of the slab ceilings



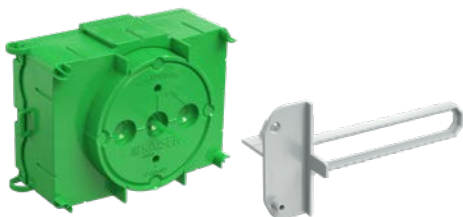
Transitions

- For magnetic and adhesive attachments
- For conduit sizes of Ø 20 mm, Ø 25 mm and Ø 32 mm
- For secure conduit connections at transitions between different components
- For uninterrupted empty conduit connections and outlets in walls and ceilings





Accessories

- System accessories complement the precast concrete programme
- Conduit connectors for safe conduit connection
- Universal support and extension elements for overhead installations



System Flat 45. For prefabricated concrete garages and prefabricated concrete bathrooms


- For electrical installation in modularised, industrially produced room systems
- System installation depth 45 mm
- For use in walls from 5 cm
- Fixing to the formwork using magnets, expansion dowels, rivets and threaded screws

	automated or manual production with System magnet	automated production as well as automated removal and storage with System magnet PLUS
		
	pg. 212	pg. 212
For installation accessories		
One-gang junction boxes		pg. 215
For cable outlets		
Luminaire installation and connection		pg. 226
Wall and ceiling transitions		
End and transition grommets		pg. 232
30° wall and ceiling transition		pg. 233

Concrete construction (precast concrete production) accessories		
Conduit connector		pg. 217
Fixing		pg. 216
Support element		pg. 223
Sealing of electrical installation conduits (air-tight and smokeproof)		pg. 32
Plaster compensation		pg. 216

System Flat 45.

The system for serially pre-assembled room modules made of concrete.

System Flat 45 Product overview		
	For prefabricated concrete garages and prefabricated concrete bathrooms	
		
	pg. 238	
For installation accessories		
One-gang box		pg. 239
One-gang junction box		pg. 239
Wall light connection box		pg. 239
Accessories		
Fastening and support elements Flat 45		pg. 240
Expanding dowel		pg. 240
Magnet		pg. 240

The KAISER product range for precast concrete

Industrially precast slab concrete elements are produced with dimensional accuracy largely using an automated precast concrete process. The high level of pre-planning, industrial prefabrication in a protected environment and automation during production with regard to the fixing and assembly of installation parts ensure short assembly times and minimised costs. The components for the electrical installation must also be fixed and integrated into the wall or ceiling with the same level of precision as is applied to their manufacture.



1 Wall and ceiling transition 90°, Oval funnel | **2** Large slab ceiling box 115 for magnet attachment | **3** HaloX® 250 with tunnel for precast concrete for magnet attachment | **4** B² one-gang junction boxes for magnet attachment | **5** B² one-gang junction box without plaster skin, depth 68.5 mm | **6** B² one-gang junction box with plaster skin, Universal extension element 175 to 300 mm | **7** End and transition grommet, wall and ceiling elbow 30°, wall and ceiling transition 90° for magnetic mounting | **8** HaloX® 180 for precast concrete for magnet attachment | **9** HaloX® 180 / 250 for precast concrete for magnet attachment | **10** HaloX® 180 with tunnel for precast concrete for magnet attachment | **11** Universal installation housing with mineral fibreboard | **12** B² one-gang junction box without plaster skin, depth 48.5 mm

Perfect connections for automated production.

The system magnet provides the basis for good installation of all electrical installation solutions in precast concrete.



Application examples



The system magnet is used to hold B² one-gang junction boxes,...



...HaloX® luminaire and loudspeaker housings,...



...wall and ceiling transition 30°, end and transition grommets...



...as well as for accommodating large slab ceiling boxes.



As well as for the new 48.5 mm extension element...



...the new wall-ceiling transitions 90°,...



...the central transition casing,...



...and the system magnet adapter for the inclined support attachment.

One system magnet for all applications.

The system magnet is suitable for all installation parts required in wall and ceiling production to prepare the electrical installation in-factory. The system magnet can be used for correct positioning in both manual and automated production. In automated production, the magnet can be placed on the formwork table automatically and in the correct position using the multifunction gripper. The PLUS system magnet can also be removed and magazined automatically.





NEW

System magnet and system magnet PLUS

The system magnet has created a new standard in automated precast concrete for efficient manufacturing processes. This means that the electrical installation can be efficiently implemented using digital planning (BIM) and can flow seamlessly into the precast concrete production process. The complete electrical installation can now be automatically integrated into the in-factory production process with the new system magnet (item no. 1299-69) or system magnet PLUS (item no. 1299-70). Regardless of whether you're using B² one-gang junction boxes, wall and ceiling transitions, large slab ceiling boxes or luminaire and loudspeaker housings, the new system magnets can be used to position everything safely and with millimetre precision. After removing the concrete formwork elements, the system magnets PLUS (item no. 1299-70) can be removed automatically.

- The complete installation can be carried out with only one type of magnet – for automated setting (system magnet, item no. 1299-69) and/or setting and removal (system magnet Plus, item no. 1299-70)
- Four sideways notches ensure torsion-proof installation of the one-gang boxes
- Reusable



System magnet

- for accurate positioning during automated or manual production
- with an anti-twist device for one-gang boxes
- adhesive force 500 N (50 kg)
- Can be used for the following articles:
- HaloX® installation housing / item no. 1282-74/-75/-76 and 1283-74/-76
- B² one-gang junction boxes / item no. 1262-06, 1263-06, 1264-06
- 115 large slab ceiling box / item no. 1227-16
- End and transition bushes / item no. 1261-82/-83/-84
- Wall and ceiling transitions 30° / item no. 1261-92/-93/-94

NEW



Art.-No.	1299-69
Inner packaging/shipping	- / 10

System magnet PLUS

NEW

INNOVATION



3D animation

- for correct positioning during automated production as well as automated removal and storage
- with an anti-twist device for one-gang boxes
- adhesive force 500 N (50 kg)
- Can be used for the following articles:
- HaloX® installation housing / item no. 1282-74/-75/-76 and 1283-74/-76
- B² one-gang junction boxes / item no. 1262-06, 1263-06, 1264-06
- 115 large slab ceiling box / item no. 1227-16
- End and transition bushes / item no. 1261-82/-83/-84
- Wall and ceiling transitions 30° / item no. 1261-92/-93/-94



Art.-No.	1299-70
Inner packaging/shipping	- / 10

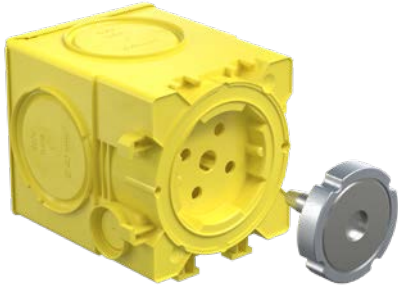
Magnet

- for clamp attachment in the box
- for anti-shock fixing of one-gang junction boxes in horizontal formwork
- Adhesive force of 900 N (90 kg)
- Magnet remains on the formwork table after formwork removal
- Centering device for correct positioning during automated production



Art.-No.	1261-81
Inner packaging/shipping	- / 5

B² one-gang junction boxes



NEW

The new B² one-gang junction boxes for precast concrete offer plenty of space for terminals and cables thanks to their large volume and ease of assembly. The version with a slot for the system magnets (Art.-Nr. 1299-69) or system magnet PLUS (Art. No. 1299-70) is perfect for quick attachment to system magnets that have already been set automatically. Multiple combinations with a standardised combination distance of 71 mm can be created quickly and easily using the connection options on the side of the B² one-gang junction boxes. The separately available conduit connectors for toolless conduit connection prevent concrete from flowing in and, at the same time, dampen conduit vibrations during the compaction process.

- For in-factory installation
- Slot for system magnet (Art.-No. 1299-69) and system magnet PLUS (Art.-No. 1299-70)
- 4 screw domes and 2 expanding claw fields for accessory fitting
- Standardised combination distance 71 mm
- 1-piece

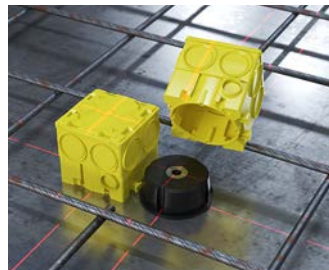
INNOVATION



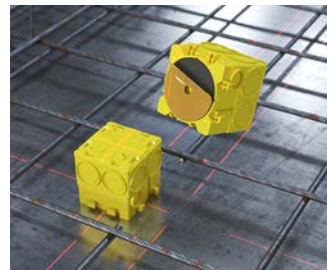
Fixing variant



B² one-gang junction boxes with holder for KAISER system magnets (Art. No. 1299-69 / 1299-70).



B² one-gang junction boxes without plaster skin with holder for the magnet (Art. No. 1261-81).



B² one-gang junction boxes with plaster skin to hold the adhesive foil (Art. No. 1219-00)...

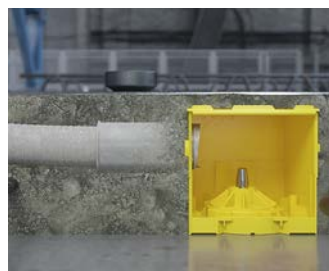


...or by means of hot glue.

Product advantages



The conduit connectors buffer the vibrations that occur between the conduit and the box during the compression process...



...and at the same time securely seal the connection in any position.



Combination of two B² one-gang junction boxes...



...fixed to the steel formwork using a system magnet.

B² one-gang junction boxes

- for in-factory installation
- Slot for system magnet (Art.-No. 1299-69) and system-magnet PLUS (Art.-No. 1299-70)
- 1-piece
- 4 screw domes and 2 expanding claw fields for accessory fitting
- Standardised combination distance 71 mm



NEW

INNOVATION



3D animation





Depth	48,5 mm	68,5 mm	83,5 mm
Installation opening Ø	60 mm	60 mm	60 mm
Markings for wires and cables up to Ø 16 mm	4	4	2
Break-out openings for DIN EN Ø 20/25 mm conduits	4	8	-
Break-out openings for DIN EN Ø 32/40 mm conduits	-	-	4
 / 	Yes / Yes	Yes / Yes	Yes / Yes
Art.-No.	1262-06	1263-06	1264-06
Inner packaging/shipping	- / 100	- / 100	- / 100

B² one-gang junction box without plaster skin

- for in-factory installation
- Fixing to the formwork by means of KAISER B² magnet (Art. No. 1261-81)
- 4 screw domes and 2 expanding claw fields for accessory fitting
- Standardised combination distance 71 mm
- 1-piece



Depth	48,5 mm	68,5 mm	83,5 mm
Installation opening Ø	60 mm	60 mm	60 mm
Markings for wires and cables up to Ø 16 mm	4	4	2
Break-out openings for DIN EN Ø 20/25 mm conduits	4	8	-
Break-out openings for DIN EN Ø 32/40 mm conduits	-	-	4
 / 	Yes / Yes	Yes / Yes	Yes / Yes
Art.-No.	1262-61	1263-61	1264-61
Inner packaging/shipping	- / 100	- / 100	- / 100



One-gang junction boxes and system components

for horizontal precast concrete

B² one-gang junction box with plaster skin

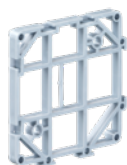
- for in-factory installation
- Fastening to the formwork by means of KAISER adhesive foil (Art. No. 1219-00) or hot glue
- 4 screw domes and 2 expanding claw fields for accessory fitting
- Standardised combination distance 71 mm
- 1-piece



Depth	48,5 mm	68,5 mm	83,5 mm
Installation opening Ø	60 mm	60 mm	60 mm
Markings for wires and cables up to Ø 16 mm	4	4	2
Break-out openings for DIN EN Ø 20/25 mm conduits	4	8	-
Break-out openings for DIN EN Ø 32/40 mm conduits	-	-	4
 / 	Yes / Yes	Yes / Yes	Yes / Yes
Art.-No.	1262-60	1263-60	1264-60
Inner packaging/shipping	- / 100	- / 100	- / 100

Distance piece 142

- for connecting to all one-gang junction boxes at 142 mm centre distance
- for separate covering, e.g. low-voltage in combinations with sockets without electric shock protection
- also for overhead boxes
- with push-button connection for extension elements



Art.-No.	1261-18
Inner packaging/shipping	- / 50

Plaster compensation ring

- for latching on the one-gang junction box
- screw distance to accessory fixing 60 mm
- with moulded-in plaster skin to prevent ingress of cleaning material



Height	14,5 mm
Diameter	60 mm
Art.-No.	1261-60
Inner packaging/shipping	25 / 250

B² conduit connectors

The range of B² conduit connectors offers a secure and toolless conduit connection to the B² one-gang junction boxes without the need for special tools. The conduit connection created using a conduit connector is absolutely impermeable to concrete and safely dampens the vibrations of the conduits during the compaction process. As the conduit connection is made outside the B² one-gang junction boxes, no conduit protrudes into the interior of the box, thus eliminating the need to shorten the conduit on the inside. With the new 90° conduit connectors, sideways conduit connections can now also be easily implemented in narrow installation areas.

- Toolless conduit connection, no special tools required
- Precisely fitting „variable“ conduit connection, absolutely sealed against concrete
- Damping of vibrations during the high-frequency or low-frequency compression process
- Conduit connection outside the one-gang junction box, no conduits protruding into the interior of the box
- Conduit connectors 90° for the lateral connection of conduits in narrow installation areas



NEW



3D animation

Secure and fast connections using KAISER conduit connectors

With the extensive KAISER conduit connector programme, all rigid or flexible conduits in diameters of 20, 25, 32 and 40 mm can be connected to the B² one-gang junction boxes. Two cutting edges on the connection piece are used to open the box entries without the need for tools; all that is needed to open the entry is to turn it with pressure against the box.



B² conduit connectors

for horizontal precast concrete

Application examples



B² conduit connectors with integrated conduit lock for flexible as well as rigid conduits Ø 20/25/32/40 mm.



Insert the tips of the conduit connector into the desired conduit entry...



...and using pressure, turn against the one-gang junction box until the feed-through is cut out.



Straight conduit connectors as well as 90° and 60° versions enable every conceivable conduit connection.

Processing instructions / prefabrication



The B² range, consisting of one-gang junction boxes, conduit connectors and wall/ceiling transitions, enables complete pre-assembly of the electrical installation. For this...



...the conduit connectors and wall/ceiling transitions offer the greatest possible tolerance compensation when using rigid conduits.



The planned sub-assemblies for the respective concrete wall elements can be prefabricated in the factory to fit precisely and on time...



...and then simply and quickly positioned on the form-work table in the circulation system without unnecessarily burdening the production process.

Conduit connector

- Toolless conduit connection to the B² one-gang junction boxes
- Accepts rigid and flexible conduits
- Damping of conduit vibrations during the compaction process
- Prevents the conduits penetrating the one-gang junction box and thus prevents conduits from being shortened later on
- Art.-Nr. 1261-21 replaces Art. No. 1261-20 and Art. No. 1261-26 replaces Art. No. 1261-25

NEW



Product-Data



DIN EN conduit Ø	20 mm	25 mm	32 mm	40 mm
Art.-No.	1261-21	1261-26	1261-32	1261-40
Inner packaging/shipping	- / 100	- / 100	- / 100	- / 100

Conduit connectors Ø 20/25/32/40 mm



With built-in conduit lock designed especially for corrugated conduits as well as rigid conduits with a diameter of Ø 20/25/32/40 mm.



The tip of the conduit connector is inserted at the marking.



Using pressure, the conduit connector is turned against the one-gang junction box until the feed-through is cut out.



Snap in the conduit connector and insert the conduit into the conduit connector.

Conduit transition coupling Ø 32 mm

NEW

- For toolless connection of Ø 32 mm conduits to the B² one-gang junction boxes 1262-XX and 1263-XX
- Accepts rigid and flexible conduits
- Damping of conduit vibrations during the compaction process
- Prevents the conduits from penetrating the B² one-gang junction boxes and thus avoids subsequent conduit shortening



DIN EN conduit Ø	32 mm
Art.-No.	1263-32
Inner packaging/shipping	- / 100

Conduit transition coupling Ø 32 mm – Application examples



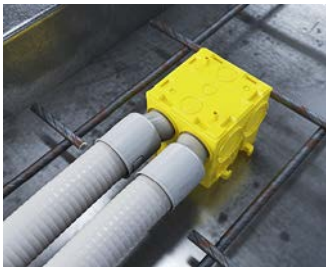
With built-in conduit lock designed especially for corrugated conduits with a diameter of 32 mm.



Push the nose of the conduit transition coupling at the marking of the box and turn it with pressure against the B² one-gang junction box until the feed-through is cut out.



The conduit transition coupling directs the inner diameter of the conduit unrestricted into the B² one-gang junction boxes Art. No. 1262-XX and 1263-XX...



...and thus enables the secure conduit connection of two Ø 32 mm conduits from one direction.

90° conduit connector

NEW

- Toolless conduit connection to the B² one-gang junction boxes
- Accepts rigid and flexible conduits
- Damping of conduit vibrations during the compaction process
- Prevents the conduits penetrating the one-gang junction box and thus prevents conduits from being shortened later on
- Easy cable pull-in thanks to optimised 90° conduit elbow



DIN EN conduit Ø	20 mm	25 mm	32 mm
Art.-No.	1262-20	1262-25	1262-32
Inner packaging/shipping	- / 100	- / 100	- / 100

Conduit connector 90° – Application examples



Pierce the tip of the conduit connector 90° at the marking and turn it with pressure against the B² one-gang junction box until the feed-through is cut out.



Insert the conduit in engaged 90° conduit connector.



The 90° conduit connectors enable the lateral connection of conduits even in tight installation areas...



...for both flexible and rigid conduits.

60° conduit connector

- space-saving entry of conduits in confined spaces, e.g. door and window areas
- for punching out markings without tools
- for fitting flexible 25 mm DIN EN conduits



Art.-No.	1266-25
Inner packaging/shipping	- / 100

Conduit connector 60° / diameter 25 mm



Snap the two halves of the 60° conduit connector together.



Pierce the tip of the 60° conduit connector at the desired conduit entry and turn until the feed-through is cut out.



Insert the conduit in engaged conduit connector 60°.



3-unit combination with inserted conduits in the wall area.

48.5 mm extension element for system magnet

The new 48.5 mm extension element for precast concrete enables automated positioning and fixing of overhead electrical installations in solid concrete walls as well as double concrete walls. The integrated slot for the system magnets (Art. No. 1299-69) and system magnet PLUS (Art. No. 1299-70) offers a safe, formwork-flush fit on the horizontal steel formwork for the circulation systems used in the concrete plants. At the same time, the tried-and-tested B² push-button connection ensures a secure connection to all B² one-gang junction boxes and B² extension elements and thus enables overhead installation from a wall thickness of 100 mm.

- Slot for system magnet (Art.-No. 1299-69) and system magnet PLUS (Art.-No. 1299-70)
- For use in automated production lines
- Push-button connection to all B² one-gang junction boxes and B² extension elements
- Can be combined with itself, the B² one-gang junction boxes and distance piece 142
- Integrated closing cap to protect the rear of the system magnet from concrete
- Spacers at the front ensure complete flow around the recess
- After formwork removal, the system magnet remains on the formwork table



NEW

Processing instructions



The fixing of 48.5 mm extension element (Art. No. 1261-02) for use in automated production lines is carried out via...



...the system magnets (Art. No. 1299-69 or 1299-70) and thus provides the precisely aligned and secure basis for overhead installation.



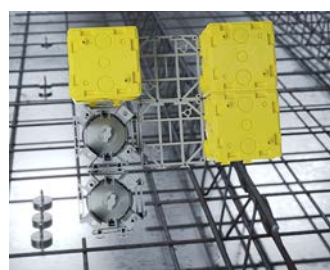
By putting on the integrated closing cap, the interface of the system magnet is protected from concrete on the rear side.



Peripheral sealing lips protect the system magnet from the inflowing concrete on the front side, while the external spacers allow the concrete to completely flow around the recess at the same time.



The connection between the extension element and B² one-gang junction boxes is made via the proven B² push-button connection.



The 48.5 mm extension element can be combined with itself, the B² one-gang junction boxes and the distance piece 142 (Art. No. 1261-18).



In combination with the extension element 10 to 50 mm (Art. No. 1261-10) and the universal extension elements 105 - 170 mm (Art. No. 1261-08)...



...and/or 175 - 300 mm (Art. No. 1261-09), overhead installations can be realised in all wall element thicknesses.

Extension element for system magnet

for horizontal precast concrete

48.5 mm extension element for system magnet

NEW

INNOVATION



3D animation

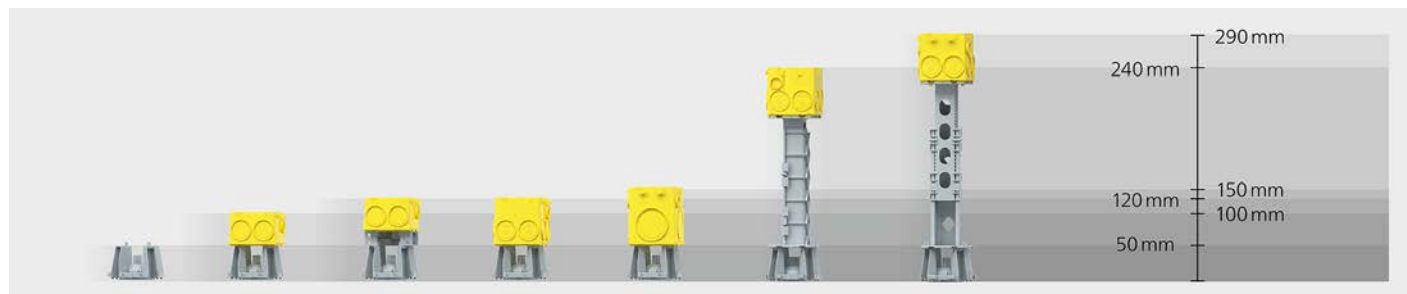
- for installation of overhead B² one-gang junction boxes
- Slot for system magnet (Art.-No. 1299-69) and system magnet PLUS (Art.-No. 1299-70)
- Standardised combination distance 71 mm
- Can be used for the following articles:
 - B² one-gang junction boxes / Art. No. 1262-XX, 1263-XX, 1264-XX
 - 10 – 50 mm extension element / Art. No. 1261-10
 - Universal extension elements / Art. no. 1261-08/-09
 - Flat 45 one-gang box / Art. No. 1256-01
 - Flat 45 one-gang junction box / Art. No. 1266-01
 - Flat 45 wall light connection box / Art. No. 1246-01
- Can be combined with the following items:
 - B² one-gang junction box / Art. No. 1262-XX, 1263-XX, 1264-XX
 - B² distance piece 142 / Art. No. 1261-18



Vertical installation height	48,5 mm
Art.-No.	1261-02
Inner packaging/shipping	- / 100

Application examples – 48.5 mm extension unit

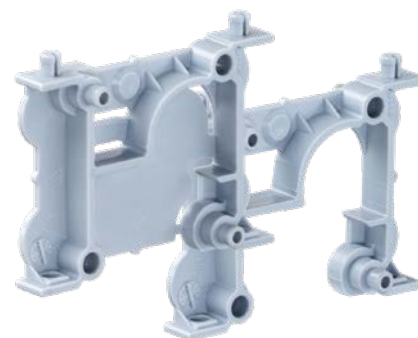
Simple and safe adjustment to the required wall thickness for solid wall elements and for double walls.



Extension element 10/50 mm

Extension element for bridging wall thicknesses and supporting one-gang boxes during installation on the opposing formwork. Bridging of up to 100 mm (plus box dimensions) can be underpinned securely in increments of 10 or 50 mm.

- For installation of overhead one-gang junction boxes
- Fitting height: vertical 50 mm, horizontal 10 mm
- can be attached to one-gang junction boxes or abutment using push-stud conduit connector
- Clip the connector into place, insert the conduit into the connector.



Processing instructions



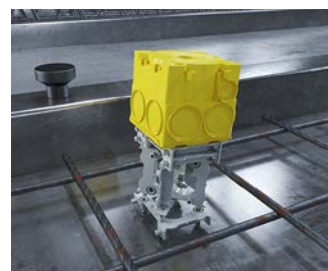
Connected crossways, the elements provide stable and non-distorting support.



A wide range of possibilities for adjusting the installation height.



Different installation heights can be created in 10 mm or 50 mm increments.



The abutment is required as an initial element on the switch table for overhead boxes and can be connected to extension elements and one-gang junction boxes.

Extension element 10/50 mm

- for fitting of overhead one-gang junction boxes at greater heights
- can be attached to one-gang junction boxes or abutment using push-stud conduit connector



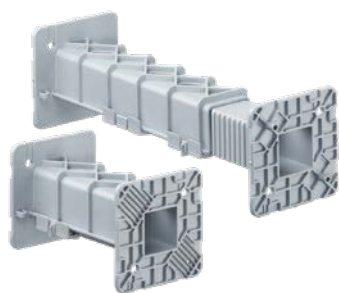
Installation heights, horizontal	10 mm
Installation heights, vertical	50 mm
Art.-No.	1261-10
Inner packaging/shipping	- / 50

Abutment

- for fitting of overhead one-gang junction boxes at greater heights
- for fixing to formworks



Art.-No.	1261-11
Inner packaging/shipping	- / 50



Universal extension element from 105 mm

Universal extension element for bridging wall thicknesses of more than 105 mm and supporting one-gang boxes during installation on the opposing formwork. Thanks to the various sizes, heights of 105 mm up to 300 mm (plus box dimensions) can be bridged in increments of 5 mm.

- For installation of overhead one-gang junction boxes
- Height adjustable in increments of 5 mm
- Can be attached to one-gang junction boxes using push-button connection



Processing instructions



Connect the universal extension element and the B² one-gang junction box using the push-button connection.



Attach the universal extension element to the formwork table with hot glue.



The correct height is achieved by simply assembling the two halves.



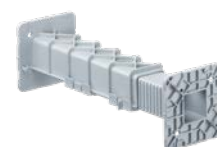
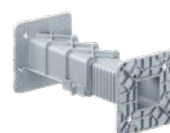
Opposite, B² one-gang junction boxes installed with universal extension element.

Note

For lengths of less than 105 mm, the two parts are simply shortened and put back together again.

Universal extension element

- for fitting of overhead one-gang junction boxes at greater heights
- height adjustable in increments of 5 mm



Length (+ box installation height)	105 - 170 mm	175 - 300 mm	105 - 170 mm	175 - 300 mm
attached using hot glue	Yes	Yes	-	-
can be attached with push-stud conduit connector	-	-	Yes	Yes
Art.-No.	1261-06	1261-07	1261-08	1261-09
Inner packaging/shipping	- / 50	- / 50	- / 50	- / 50

System magnet adapter for the inclined support fixing

In addition to the electrical installation components in concrete wall production, there are new system magnet adapters for the automated integration of the mounting dowels for installing the wall elements on the construction site into the factory production process. These are matched to the available inclined support attachments on the market and thus enable the complete factory integration of all components required for a wall element.

- Patented system magnet locking mechanism for a secure fit on the system magnet when an inclined support attachment is attached
- Easy placement on the system magnets and simple removal after formwork removal
- Secure and concrete-tight connection to the mounting dowel
- Tapered contour for the adapter to remain securely on the formwork table



NEW

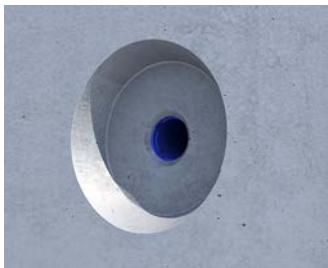
Application examples



Thanks to the innovative system magnet lock, the adapter can be easily attached to and removed from the system magnets (Art. No. 1299-69 / 1299-70).



As soon as the mounting dowel is placed on the adapter, the system magnet locking mechanism engages,...



...so that the adapter remains securely on the magnets after formwork removal, also thanks to its conical contour.



At least two mounting dowels are required for each wall element when installing the concrete wall elements.

System magnet adapter for the inclined support attachment

- For the automated and precise positioning of all commercially available inclined support attachments or assembly dowels
- Slot for system magnet (Art.-No. 1299-69) and system magnet PLUS (Art.-No. 1299-70)

NEW



For manufacturers	On request
Art.-No.	1200-99
Inner packaging/shipping	- / 200



NEW

Large slab ceiling box

The large slab ceiling box is suitable for in-factory installation in prefabricated ceilings. The version with a slot for the system magnet (Art. No. 1299-69) or system magnet PLUS (Art. No. 1299-70) is ideally suited for quick attachment to system magnets that have already been set automatically. The large slab ceiling boxes are already a part of the ceiling when they reach the construction site and enable the quick insertion of empty conduits. The resealable quick-release cover can be opened with a quarter turn and so enables the quick and exact creation of conduit entries using punch pliers (Art. No. 1286-33/-34).

- For in-factory installation
- Slot for system magnet (Art.-No. 1299-69) and system magnet PLUS (Art.-No. 1299-70)
- Large adhesive area with rough surface structure for a secure fit on the formwork table
- 115-mm installation height guarantees optimal transport conditions for prefabricated ceilings
- Quick-release cover for fast cutting of conduit entries using punch pliers
- Integrated M5 domed cap nut ensures secure fitting of a light hook.
- With closing cover for on-site fitting of conduits



Processing instructions



Large slab ceiling box fixed to steel table by means of system magnet.



Quick-release cover for fast cutting of conduit entries using punch pliers.



8 markings for entries up to Ø 25 mm for easy creation of cable or pipe entries above the filigree ceiling element.



M5 metal nut for secure mounting of light hooks up to 100 N (10 kg) according to DIN EN 60670.

Large slab ceiling box 115


- For in-factory installation
- Slot for system magnet (Art.-No. 1299-69) and system magnet PLUS (Art.-No. 1299-70)
- Installation height 115 mm, with M5 metal nut for light hook (min. hook length: 115 mm + plaster thickness)
- With closing cover for on-site fitting of conduits
- maximum light hook load according to DIN EN 60670 100 N (10 kg)

NEW



3D animation



Depth	115 mm
Exit opening Ø	60 mm
Markings for wires and cables up to Ø 25 mm	8
Markings for wires and cables up to Ø 32 mm	4
Number of parts	2
	Yes
Art.-No.	1227-16
Inner packaging/shipping	- / 100

Large slab ceiling box 115


- for in-factory installation
- Fastening to the formwork by means of KAISER adhesive foil (Art. No. 1219-00) or hot glue
- Installation height 115 mm, with M5 metal nut for light hook (min. hook length: 115 mm + plaster thickness)
- With closing cover for on-site fitting of conduits
- maximum light hook load according to DIN EN 60670 100 N (10 kg)



Large slab ceiling box 105

- for in-factory installation
- Fastening to the formwork by means of KAISER adhesive foil (Art. No. 1219-00) or hot glue
- Installation height 105 mm, with metal nut M5 for light hook (min. hook length: 105 mm + plaster thickness)
- for space frame heights up to 11 cm (incl. distance pieces)
- With closing cover for on-site fitting of conduits
- maximum light hook load according to DIN EN 60670 100 N (10 kg)



Depth	115 mm	105 mm
Exit opening Ø	60 mm	60 mm
Markings for cables and DIN EN conduits up to Ø 25 mm	8	8
Markings for cables and DIN EN conduits up to Ø 32 mm	4	-
Number of parts	2	2
especially suitable for hot glue attachment	Yes	Yes
	Yes	Yes
Art.-No.	1227-55	1227-54
Inner packaging/shipping	- / 100	- / 100

Light hook

- For retrofitting in ceiling boxes (EN 60670)
- maximum light hook load according to DIN EN 60670 100 N (10 kg)
- with M5 thread, fully insulated



Length of shank	105 mm	115 mm	125 mm
Diameter hook	26 mm	26 mm	26 mm
Overall length	132 mm	143 mm	151 mm
Thread length	10 mm	10 mm	10 mm
Art.-No.	1226-97	1226-98	1226-99
Inner packaging/shipping	- / 100	- / 100	- / 100



NEW

Central transition casing

The new central transition box for use in in-situ concrete ceilings or factory prefabricated element ceilings is used for the central connection of conduits of different diameters. As a central feed-in point, it enables a clean transition to circuit distribution boxes and cable routing systems, allowing, for example, all the supply cables required for the electrical installation of a flat to be brought together at one transition point.

- For leaving out several cables, e.g. above an electrical distribution board located in the lightweight wall or surface-mounted
- For system magnetic, adhesive or nail fastening
- Conduit entries for Ø 20 mm, Ø 25 mm and Ø 32 mm on the long sides, up to Ø 63 mm on the short sides
- Positioning of the conduit entries above the first reinforcement layer or the top of the filigree ceiling
- Can be connected in a row as often as required



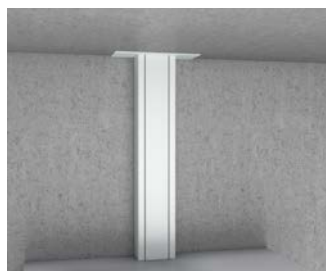
Application examples



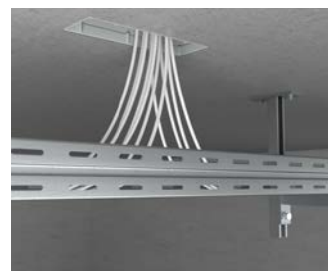
Numerous entries for conduits from Ø 20 mm to Ø 63 mm.



The central transition casing for the exit of several conduits, e.g. is located in above in the lightweight wall...



...or surface-mounted electrical distribution...



...as well as cable routing systems.

Processing instructions



Fixing by means of KAISER system magnet (Art. No. 1299-69) or KAISER system magnet PLUS (Art. No. 1299-70).



Fixing by means of hot glue.



Fixing by means of steel nails.



If required, several central transition casings can be lined up next to each other.

Installation



The fixing of the central transition casing (Art. No. 9914.10) for use in automated production systems...



...is achieved using the KAISER system magnets (Art. No. 1299-69 or 1299-70).



Latch the centre transition casing onto the front section.



After curing, the prefabricated ceiling formwork is removed and prepared for transport to the construction site.



The required conduit entries can be opened with the KAISER step drill (Art. No. 1284-32)...



...or opened with a screwdriver and hammer.



The side entries \varnothing 40 mm to \varnothing 63 mm can be drilled out using a hole saw.



Numerous entries for conduits from \varnothing 20 mm to \varnothing 63 mm.



Open the plaster skin with a hammer and, if necessary, with a screwdriver.



The upper frame (Art. No. 9914.10.68) can be used for suspended ceiling insulation. Multiple times if required.



The plastic screw cover (Art. No. 9914.10.02) with six screws supplied is available for a clean room separation...



...or the wet lid made of aluminium (Art. No. 9914.10.03) with anodised surface and six stainless steel screws supplied.

Central transition casing

for precast concrete

Central transition casing

- For system magnetic, adhesive or nail fastening
- Conduit entries for Ø 20 mm, Ø 25 mm and Ø 32 mm on the long sides, up to Ø 63 mm on the short side
- The conduit entries are located above the first reinforcement layer or the top of the filigree ceiling

NEW





INNOVATION



3D animation



Product-Data

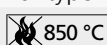

Length x Width x Depth	326 x 104 x 118 mm
Combination conduit entries M20/25	24
Combination conduit entries M25/32	6
Combination conduit entries M40/50/63	2
Extensive pull-out apertures	4
Number of nails	6
 650 °C / 	Yes / Yes
CE	Yes
Art.-No.	9914.10
Inner packaging/shipping	- / 10

Screw-in and moisture-proof cover ALU for central transition casing

NEW



INNOVATION

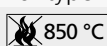

Length x Width x Height	330 x 120 x 5 mm	330 x 120 x 4 mm
Colour	RAL 9010	-
Screws	6	6
For type number	9914.10	9914.10
 850 °C / 	Yes / Yes	-
CE	Yes	-
Art.-No.	9914.10.02	9914.10.03
Inner packaging/shipping	- / 150	- / 50

Upper frame for central transition casing

NEW



INNOVATION

Length x Width x Depth	308 x 98 x 45 mm
For type number	9914.10
 850 °C / 	Yes / Yes
CE	Yes
Art.-No.	9914.10.68
Inner packaging/shipping	- / 5

Wall and ceiling transitions

For the first time, the new end and transition grommets, 30° wall and ceiling elbows, and 90° wall and ceiling transitions allow the automated positioning and fastening of conduit connections in precast concrete elements. The integrated slot for the system magnets (Art. No. 1299-69) and system magnet PLUS (Art. No. 1299-70) enables a safe, formwork-flush fit on the horizontal steel formwork for the circulation systems used in the concrete plants. The new items also provide alternative options for fixing to formwork. They can be fixed using hot glue, steel nails and even for overhead installation in solid wall elements using Prefix® Universal supports (Art. No. 1261-00).

- Slot for system magnet (Art. No. 1299-69) and system magnet PLUS (Art. No. 1299-70) for use in automated production lines
- For conduit sizes of Ø 20 mm, Ø 25 mm and Ø 32 mm
- All end and transition grommets, wall and ceiling elbows 30° and wall and ceiling transitions 90° can be combined with each other
- Resealable sealing cover to protect the empty conduit system from concrete when installed on top, during transport and when erected on site
- Signal bristle and bold colouring for easy retrieval in the concrete surface
- Optimal elbow radius for easy cable insertion
- 1-part design, immediately ready for use



3D animation

Application examples



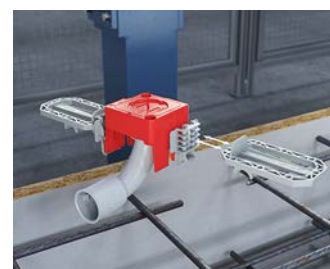
Wall and ceiling transitions with slot for the KAISER system magnet (Art. No. 1299-69) and system magnet PLUS (Art. No. 1299-70).



Wall and ceiling transitions for fixing by means of hot glue.



For mounting on the working formwork – two sturdy nail domes with nail pre-fixing enable a secure hold on the formwork with steel nails.

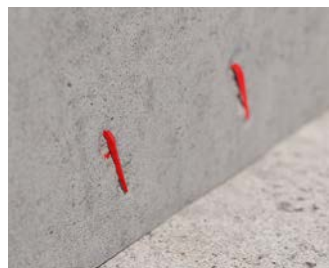


Prefix® universal support (Art. No. 1261-00) – Simple and fast processing for overhead installations.

Processing instructions



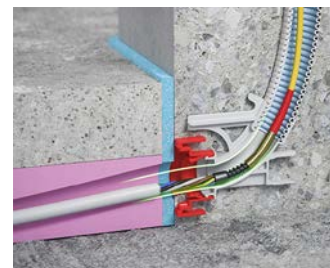
Re-closable closing cover – Protection from concrete during transport and when erecting the wall element on the construction site.



Signal bristle – Easy locating of the transition in the wall surface



The new elbows can be combined in the best possible way and can therefore be processed quickly and precisely.



The optimal elbow radius of the new unit facilitates flexible and easy cable insertion.

One-gang junction boxes and system components

for horizontal precast concrete

Processing instructions - Pre-assembly



The B² range, comprising one-gang junction boxes, conduit connectors and wall/ceiling transitions enables complete pre-assembly of the electrical installation.



The conduit connectors and wall/ceiling transitions offer the greatest possible tolerance compensation when using rigid conduits.



The planned sub-assemblies for the respective concrete wall elements can be prefabricated in the factory to fit precisely and on time.



These can then be positioned on the formwork table quickly and easily in the circulation system without unnecessarily burdening the production process.

End and transition grommets

- For connecting conduits at transition points
- Slot for system magnet (Art.-No. 1299-69) and system magnet PLUS (Art.-No. 1299-70)
- Large adhesive surface
- For overhead installation in solid walls
- With closing cover to prevent ingress of foreign bodies
- Combinable end and transition grommets and wall and 30° ceiling transition
- Two slots for Prefix® system accessories
- Suitable for all types of formwork
- Two nail domes

 **INNOVATION**



Product-Data



Length x Width x Depth	53 x 64 x 48 mm	53 x 64 x 48 mm	53 x 64 x 49 mm
DIN EN conduit Ø	20 mm	25 mm	32 mm
Number of parts	2	2	2
Art.-No.	1261-82	1261-83	1261-84
Inner packaging/shipping	- / 100	- / 100	- / 100

30° wall and ceiling transition

- For connecting conduits at transition points
- Slot for system magnet (Art.-No. 1299-69) and system magnet PLUS (Art.-No. 1299-70)
- Large adhesive surface
- For overhead installation in solid walls
- With closing cover to prevent ingress of foreign bodies
- Combinable end and transition grommets and wall and 30° ceiling transition
- Two slots for Prefix® system accessories
- Suitable for all types of formwork
- Two nail domes



INNOVATION



Product-Data

Length x Width x Depth	80 x 64 x 86,5 mm	81 x 64 x 86,5 mm	86 x 64 x 91 mm
DIN EN conduit Ø	20 mm	25 mm	32 mm
Number of parts	2	2	2
Art.-No.	1261-92	1261-93	1261-94
Inner packaging/shipping	- / 100	- / 100	- / 100

90° wall and ceiling transitions

NEW

- For connecting conduits at transition points
- Slot for system magnet (Art.-No. 1299-69) and system magnet PLUS (Art.-No. 1299-70)
- Large adhesive surface
- Ideally suited for the construction of a rigid conduit system
- For overhead installation in solid walls
- With closing cover to prevent ingress of foreign bodies
- Can be combined with end and transition grommets and 30° wall and ceiling bends
- Two slots for Prefix® system accessories
- Suitable for all types of formwork
- Two nail domes



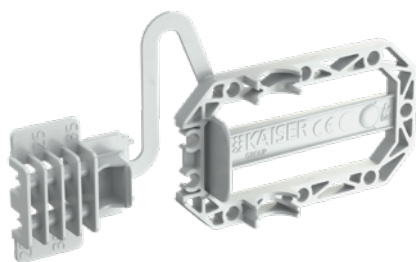
INNOVATION



Product-Data

Length x Width x Depth	105 x 64 x 78 mm	105 x 64 x 80,5 mm	105 x 64 x 84 mm
DIN EN conduit Ø	20 mm	25 mm	32 mm
Number of parts	2	2	2
Art.-No.	1261-95	1261-96	1261-97
Inner packaging/shipping	- / 100	- / 100	- / 100

Prefix® universal support



NEW

The Prefix® universal support enables simple, fast fitting of electrical installations in solid wall elements on the opposing formwork side without a support element for the steel formwork table. The support can be easily adjusted to the required concrete ceiling by means of a snap-in connection and attached to the new end and transition bushes, wall and ceiling transitions 30° and wall and ceiling transitions 90° by means of a snap-in connection. The previously customary and costly in-house constructions using timber blanks can thus be dispensed with, disruptions to the further production process are a thing of the past and production of a good wall surface quality is guaranteed without restriction.

- For overhead electrical installations in prefabricated solid walls without support elements
- With integrated dimension indication, easily adjustable to the common concrete ceilings 20 mm, 25 mm, 30 mm or 35 mm
- Generous tolerance compensation for fixing to the reinforcement
- Prefixing using Prefix® installation technology leaves both hands free for fixing with tie wires

INNOVATION

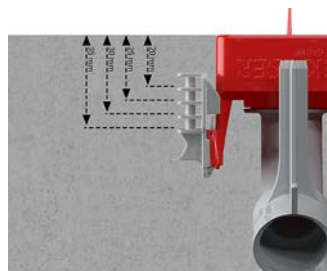
Fitting instructions



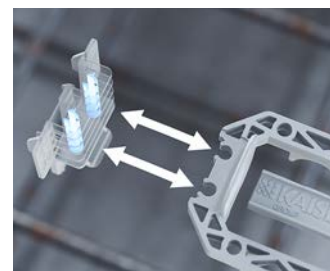
The new wall and ceiling transitions for factory production each have two opposing stable slots for the Prefix® universal support.



The required concrete ceiling can be quickly read off and precisely set using the dimensional scale. The dimensional scale is adjusted, so that the wall-ceiling transitions are minimally below the subsequent wall surface,



and therefore do not impede the next steps in the manufacturing process. The signal bristle keeps the position of the exits visible in the concrete surface.

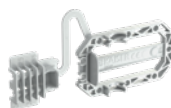


Prefix® universal supports have a stable snap-in connection and can be released and repositioned if the concrete ceiling is set incorrectly.

Prefix® universal support

- For electrical installations on the opposing formwork side.
- Facilitates fixing to the reinforcement
- Adjustable to concrete ceilings 20, 25, 30 or 35
- Pre-fixing by means of Prefix® installation technology
- Can be used for the following articles:
- End and transition bushes / item no. 1261-82/-83/-84
- Wall and ceiling transitions 30° / item no. 1261-92/-93/-94
- Wall and ceiling transitions 90° / item no. 1261-95/-96/-97

NEW



INNOVATION

Length x Width x Height	87 x 45 x 36 mm
Number of parts	1
for concrete covers	20, 25, 30, 35 mm
Art.-No.	1261-00
Inner packaging/shipping	- / 350

Wall and ceiling transition

Wall and ceiling transition for uninterrupted conduit connections and wall and ceiling exits. The exact distance to the formwork edgings can be set and fixed in 5 mm increments with the integrated measurement strip.

- For secure conduit connections on prefabricated concrete elements
- For fitting to formwork edging
- For rigid and flexible DIN EN conduits Ø 25 mm
- For locating exact height thanks to integrated measurement strip



Installation



The exact position is achieved with the help of the measurement strip and by gluing it to the formwork edging.



The moulded closing cover protects the opening against dirt and concrete. Simply open it prior to installation.



Insert the conduit into the clean installation opening.



Wall exit of a prefabricated wall as transition to the fire-free ceiling.

Wall and ceiling transition

- for fitting to formwork edging
- with moulded-in measurement strip to achieve the exact installation height in 5 mm steps
- with closing cover to prevent ingress of material



DIN EN conduit Ø	25 mm
Art.-No.	1261-12
Inner packaging/shipping	- / 100



90° wall and ceiling transition

90° wall and ceiling transition for uninterrupted conduit connections and wall and ceiling exits. The 90° bend makes it much easier to pull the cables through at a later stage.

- For secure conduit connections on prefabricated concrete elements
- For fitting to formwork edging
- For rigid and flexible DIN EN conduits
- Upper conduit entry above the filigree ceiling, for laying conduits on the building site



Processing instructions



The 90° bend ensures clean transitions and easy cable routing. Just glue the wall and ceiling transition to the formwork edging.



The clip nose is used for securing corrugated conduits with Ø 20 or Ø 25 mm.



Two integrated closing covers protect against dirt and concrete penetration.



Wall-ceiling transition 90° using the oval funnel.

Wall and ceiling transition 90°

- for easier drawing of cable through 90° bends
- for fitting to formwork edging
- accepts rigid and flexible DIN EN conduits
- with closing cover to protect against foreign bodies



DIN EN conduit Ø	20 mm	25 mm
Art.-No.	1261-16	1261-14
Inner packaging/shipping	- / 100	- / 100

Oval funnel

The oval funnel simplifies the exact joining of prefabricated concrete elements with integrated installation conduits. It guarantees safe conduit entry and provides a tolerance compensation of 1 cm or 2 cm during installation.

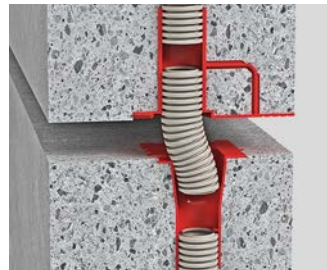
- Tolerance compensation when joining the concrete elements
- For industrially prefabricated ceiling and wall elements as well as on-site mixed concrete
- For secure connection of installation conduits on transitions of prefabricated concrete elements
- Precise joining of electrical installation conduits
- Tolerance compensation: 2 cm in longitudinal direction and 1 cm in transverse direction.



Tolerance compensation when joining the concrete elements



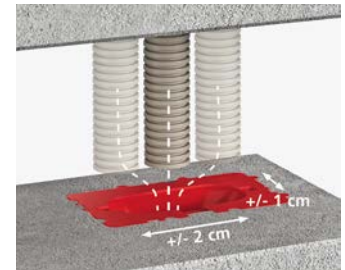
Compensation in longitudinal direction ± 20 mm.



Compensation in transverse direction ± 10 mm.



Wall-ceiling transition 90° using the oval funnel.



Good compensation of construction tolerances.

Oval funnel

- for the simple connection of DIN EN conduits with tolerance compensation for wall-wall and wall-ceiling transitions
- for installation on the transition edge
- accepts rigid and flexible DIN EN conduits
- with closing cover to prevent ingress of material



DIN EN conduit Ø	20 mm	25 mm
Art.-No.	1261-42	1261-43
Inner packaging/shipping	- / 100	- / 100