



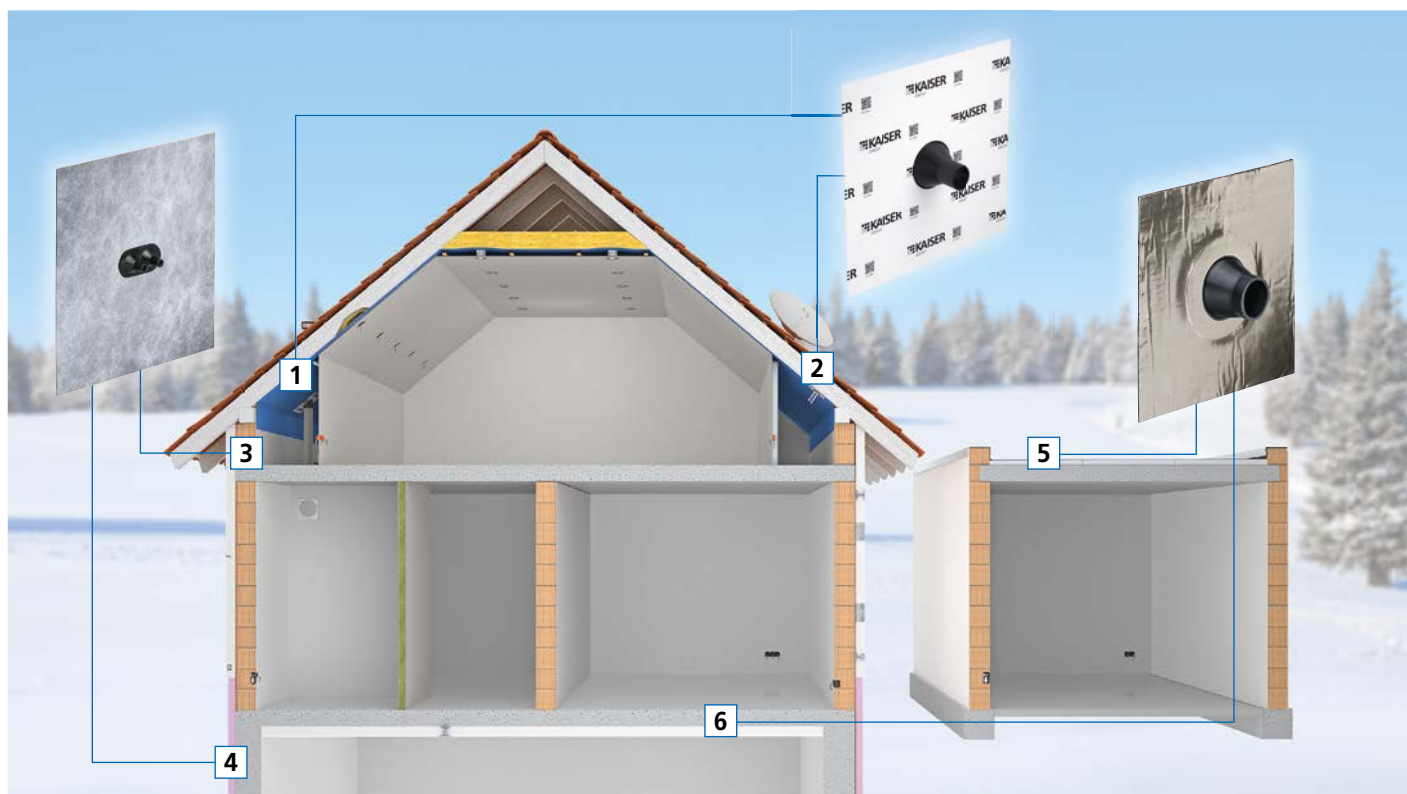
## Sealing sleeves

The KAISER range of sealing sleeves offers perfect sealing for all standard cable and conduit sizes, both indoors and outdoors. The range consists of single and double sleeves for one or two cables or conduits respectively, and of two multiple air-tight sleeves for up to six cables or conduits. The self-adhesive KAISER sealing sleeves can be fitted without the need for any tools. Talcum is applied to the sleeves before they leave the factory. They ensure easy cable or conduit feed-through, and fast processing on the building site. In contrast to the conventional improvised method, KAISER sealing sleeves guarantee the permanent air-tight sealing of installation penetrations.

- For cables Ø 4 - 15 mm and conduits Ø 15 - 110 mm
- Large contact area to cables and conduits
- Anti-kink sleeve also permanently seals very kinked cables
- Completely toolless wall installation
- Extremely good adhesion



## Applications for sealing sleeves



**1** Sealing of a ventilation conduit through the vapour or moisture barrier | **2** Sealing of more than one cable through the vapour or moisture barrier | **3** Sealings in plastered walls | **4** Sealings in the cellar area | **5** Sealings in flat roof areas | **6** Sealing of the cellar ceiling or the foundation baseplate



**Air-tight sleeve**



**Fleece-butyl sealing sleeve**



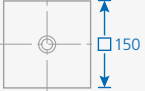
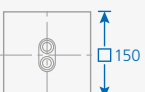
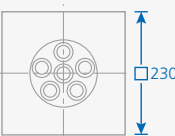
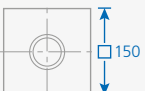
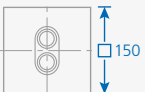
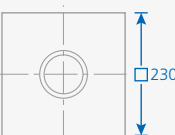
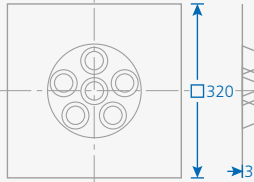
**Aluminium butyl sealing sleeve**

## Applications

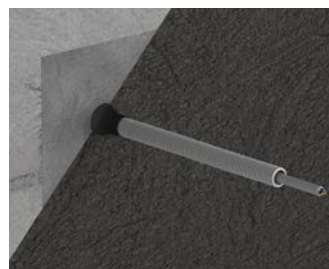
Indoors

Indoors & outdoors

Indoors & outdoors

|  | L x B   | H   | Ø mm       | Art. No.       | Art. No.       | Art. No.       |
|--|---|-----|------------|----------------|----------------|----------------|
| <b>Cables</b> (coaxial, NYM, underground, solar, etc.)                             |   |     |            |                |                |                |
| Single   |    | 150 | 4–8 mm     | <b>9059-44</b> | <b>9089-44</b> | <b>9079-44</b> |
|  |   |     | 8–12 mm    | <b>9059-46</b> | <b>9089-46</b> | <b>9079-46</b> |
|  |   |     | 12–15 mm   | <b>9059-56</b> | <b>9089-56</b> | <b>9079-56</b> |
| Double   |    | 150 | 4–8 mm     | <b>9059-45</b> | <b>9089-45</b> | <b>9079-45</b> |
|  |   |     | 8–12 mm    | <b>9059-47</b> | <b>9089-47</b> | <b>9079-47</b> |
| 6 combinations   |   | 230 | 4–11 mm    | <b>9059-61</b> | -              | -              |
| <b>Conduits</b> (electrical installation, waste water, ventilation, heating, etc.) |   |     |            |                |                |                |
| Single   |  | 150 | 15–22 mm   | <b>9059-48</b> | <b>9089-48</b> | <b>9079-48</b> |
|  |   |     | 25–32 mm   | <b>9059-49</b> | <b>9089-49</b> | <b>9079-49</b> |
| Double   |  | 150 | 15–22 mm   | <b>9059-55</b> | <b>9089-55</b> | <b>9079-55</b> |
| Single   |  | 230 | 42–55 mm   | <b>9059-51</b> | <b>9089-51</b> | <b>9079-51</b> |
|  |   |     | 50–75 mm   | <b>9059-52</b> | <b>9089-52</b> | <b>9079-52</b> |
|  |   |     | 75–90 mm   | <b>9059-53</b> | <b>9089-53</b> | <b>9079-53</b> |
|  |   |     | 100–110 mm | <b>9059-54</b> | <b>9089-54</b> | <b>9079-54</b> |
| 6 combinations   |  | 320 | 16–25 mm   | <b>9059-62</b> | -              | -              |

## Examples of use



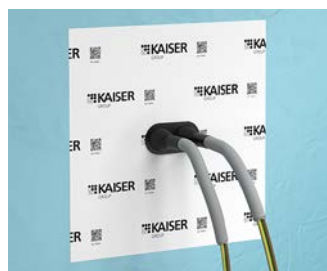
### Air-tight sleeve

Air-tight sleeve for sealing conduit and cable entries in the interior of air-tight building shells.

- extremely strong adhesion
- For guaranteed air-tight feed-throughs, especially in the attic
- 12 types for different conduit and cable diameters
- Suitable for moisture barrier foils, sarking membranes, OSB boards \*



### Examples of use



### Processing instructions

Air-tight conduit entries can be made cleanly and easily by using the self-adhesive KAISER air-tight sleeves. The sleeves create faster, more stable and, above all, more air-tight transitions than improvised methods. Please ensure that the base is dry and free from dust and grease. Processing should be carried out at a temperature higher than -5°C, and full adhesive strength is achieved after 24 hours. The sleeves have an unlimited shelf life when stored cool and dry at room temperature. \* For fibreboard, we recommend a pre-coat using primer

### Air-tight sleeves for cables and conduits

- Continuous sealing by means of air-tight layers for penetration of cables
- extremely strong adhesion
- Temperature resistance -30°C to +80°C, in the feed-through area up to +120°C
- UV-resistant, halogen-free



| Length x Width x Height | Number of cables/ conduits | Diameter of cable / pipe | Air-tight | Art.-No. | Inner packaging/ shipping |
|-------------------------|----------------------------|--------------------------|-----------|----------|---------------------------|
| 150 x 150 x 30 mm       | 1 item                     | 4 - 8 mm                 | Yes       | 9059-44  | 10 / 30                   |
| 150 x 150 x 30 mm       | 2 item                     | 4 - 8 mm                 | Yes       | 9059-45  | 10 / 30                   |
| 150 x 150 x 30 mm       | 1 item                     | 8 - 12 mm                | Yes       | 9059-46  | 10 / 30                   |
| 150 x 150 x 30 mm       | 2 item                     | 8 - 12 mm                | Yes       | 9059-47  | 10 / 30                   |
| 150 x 150 x 30 mm       | 1 item                     | 12 - 15 mm               | Yes       | 9059-56  | 10 / 30                   |
| 150 x 150 x 30 mm       | 1 item                     | 15 - 22 mm               | Yes       | 9059-48  | 10 / 30                   |
| 150 x 150 x 30 mm       | 2 item                     | 15 - 22 mm               | Yes       | 9059-55  | 10 / 30                   |
| 150 x 150 x 30 mm       | 1 item                     | 25 - 32 mm               | Yes       | 9059-49  | 10 / 30                   |
| 230 x 230 x 50 mm       | 1 item                     | 42 - 55 mm               | Yes       | 9059-51  | - / 8                     |
| 230 x 230 x 50 mm       | 1 item                     | 50 - 75 mm               | Yes       | 9059-52  | - / 4                     |
| 230 x 230 x 50 mm       | 1 item                     | 75 - 90 mm               | Yes       | 9059-53  | - / 4                     |
| 320 x 320 x 50 mm       | 1 item                     | 100 - 110 mm             | Yes       | 9059-54  | - / 4                     |

## Multiple air-tight sleeves ECON®

Cable and conduit sleeve ECON® for reliable sealing of up to 6 cable or conduit entries through the air-tight building shell - ideal for digital satellite units.

- Flexible sealing of 1 to 6 cables or conduits
- Low space requirement, powerful adhesion
- Completely toolless wall installation
- Sealing even when cables are extremely kinked
- Unused entries are reserved for later installations



### Examples of use



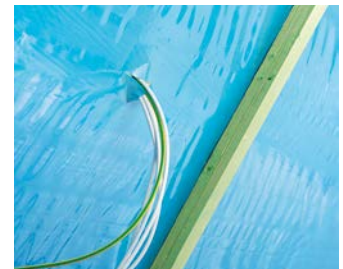
Connection of a digital satellite receiver unit.



4 coaxial cables are connected here for reception.



The mast which supports the parabolic mirror must also be incorporated in the equipotential bonding.



The cables are fed through the building's air-tight seal. This entry must be permanently sealed air-tight.

### Installation



ECON® technology's toolless cable or conduit entry offers maximum ease of installation and permits fast processing.



Before the sleeve can be glued in position, make sure that the surface is free of dust. Then remove the protective foil,...

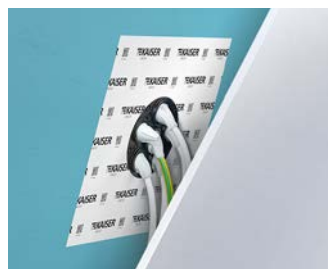


...glue the sleeve in position and thoroughly smooth it onto the surface, working from the inside to the outside.



The sleeves guarantee permanent sealing of entries, even when cables are extremely kinked. Retrofitting is easy.

### Product advantages





# Sealing sleeves

Reliable sealing of installation feed-throughs

## Cable-sleeve ECON®

- 1-piece
- extremely strong adhesion
- Temperature resistance from -25°C to +80°C
- UV-resistant, halogen-free



3D animation

|                                |                          |
|--------------------------------|--------------------------|
| <b>Length x Width x Height</b> | <b>230 x 230 x 25 mm</b> |
| Number of cable entries        | 1 - 6                    |
| Cable diameter                 | 4 - 11 mm                |
| <b>Art.-No.</b>                | <b>9059-61</b>           |
| Inner packaging/shipping       | - / 5                    |

## Conduit-sleeve ECON®

- 1-piece
- extremely strong adhesion
- Temperature resistance from -25°C to +80°C
- UV-resistant, halogen-free



3D animation

|                                |                          |
|--------------------------------|--------------------------|
| <b>Length x Width x Height</b> | <b>320 x 320 x 30 mm</b> |
| Number of conduit entries      | 1 - 6                    |
| Conduit diameter               | 16 - 25 mm               |
| <b>Art.-No.</b>                | <b>9059-62</b>           |
| Inner packaging/shipping       | - / 5                    |

## Fleece-butyl sealing sleeves

For permanent, secure sealing of installation penetrations in masonry, concrete or wood materials, etc. The highly-elastic sleeves are fitted with fleece-butyl flanges as plaster bases and provide maximum adhesion. Some surfaces must be pre-treated with KAISER primer.

- Permanently moisture-proof - for use indoors and outdoors
- The fleece sleeve can be plastered over, and is for use in plastered walls and behind composite thermal insulation systems
- Waterproofing effect with non-pressing water, e.g. against soil moisture



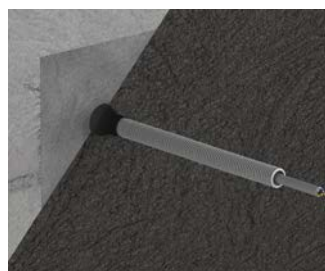
### Installation



If necessary, pre-treat the base, pull the sleeve over the cable/conduit...



...remove the protective foil and press the sleeve into position.



The adhesive flange can be plastered over and ensures permanent sealing of the masonry penetration.

### Note

To ensure secure adhesion of all KAISER air-tight sleeves, the bases must be free of dust and grease, and also dry and load-bearing. In particular, mineral and organic bases such as stone, concrete, plasterboard or fibreboard must be pre-treated with KAISER primer.

### Fleece-butyl sealing sleeves

- For cables Ø 4 - 15 mm and conduits Ø 15 - 110 mm
- Fleece-butyl sealing sleeve can be plastered over
- adhesive
- 1-piece



| Length x Width x Height | Number of cables/ conduits | Diameter of cable / pipe | Air-tight | Art.-No. | Inner packaging/ shipping |
|-------------------------|----------------------------|--------------------------|-----------|----------|---------------------------|
| 150 x 150 x 30 mm       | 1 item                     | 4 - 8 mm                 | Yes       | 9089-44  | 10 / 30                   |
| 150 x 150 x 30 mm       | 2 item                     | 4 - 8 mm                 | Yes       | 9089-45  | 10 / 30                   |
| 150 x 150 x 30 mm       | 1 item                     | 8 - 12 mm                | Yes       | 9089-46  | 10 / 30                   |
| 150 x 150 x 30 mm       | 2 item                     | 8 - 12 mm                | Yes       | 9089-47  | 10 / 30                   |
| 150 x 150 x 30 mm       | 1 item                     | 12 - 15 mm               | Yes       | 9089-56  | 10 / 30                   |
| 150 x 150 x 30 mm       | 1 item                     | 15 - 22 mm               | Yes       | 9089-48  | 10 / 30                   |
| 150 x 150 x 30 mm       | 2 item                     | 15 - 22 mm               | Yes       | 9089-55  | 10 / 30                   |
| 150 x 150 x 30 mm       | 1 item                     | 25 - 32 mm               | Yes       | 9089-49  | 10 / 30                   |
| 230 x 230 x 50 mm       | 1 item                     | 42 - 55 mm               | Yes       | 9089-51  | - / 4                     |
| 230 x 230 x 50 mm       | 1 item                     | 50 - 75 mm               | Yes       | 9089-52  | - / 4                     |
| 230 x 230 x 50 mm       | 1 item                     | 75 - 90 mm               | Yes       | 9089-53  | - / 4                     |
| 320 x 320 x 50 mm       | 1 item                     | 100 - 110 mm             | Yes       | 9089-54  | - / 4                     |



## Aluminium-butyl sealing sleeves

For permanent, secure sealing of installation penetrations through masonry, concrete or wooden materials. The highly-elastic sleeves are fitted with non-tear aluminium butyl adhesive flanges and provide maximum adhesion. Some surfaces must be pre-treated with KAISER primer.

- Permanently moisture-proof - for use indoors and outdoors
- Water-sealing effect with non-pressing water up to 0.02 bar
- Especially suitable for sealing in the cellar socle
- Large contact area to cables and conduits
- Anti-kink sleeve also permanently seals very kinked cables
- Completely toolless wall installation
- Extremely good adhesion



### Installation



Pre-treat mineral bases and fibreboards with primer.



Pull the sleeve over the cable/conduit and remove the protective foil.



Press the adhesive flange of the sleeve firmly into position.

### Aluminium-butyl sealing sleeves

- For cables Ø 4 - 15 mm and conduits Ø 15 - 110 mm
- pressing water up to 0.02 bar
- adhesive
- 1-piece



| Length x Width x Height | Number of cables/ conduits | Diameter of cable / pipe | Air-tight | Art.-No. | Inner packaging/ shipping |
|-------------------------|----------------------------|--------------------------|-----------|----------|---------------------------|
| 150 x 150 x 30 mm       | 1 item                     | 4 - 8 mm                 | Yes       | 9079-44  | 10 / 30                   |
| 150 x 150 x 30 mm       | 2 item                     | 4 - 8 mm                 | Yes       | 9079-45  | 10 / 30                   |
| 150 x 150 x 30 mm       | 1 item                     | 8 - 12 mm                | Yes       | 9079-46  | 10 / 30                   |
| 150 x 150 x 30 mm       | 2 item                     | 8 - 12 mm                | Yes       | 9079-47  | 10 / 30                   |
| 150 x 150 x 30 mm       | 1 item                     | 12 - 15 mm               | Yes       | 9079-56  | 10 / 30                   |
| 150 x 150 x 30 mm       | 1 item                     | 15 - 22 mm               | Yes       | 9079-48  | 10 / 30                   |
| 150 x 150 x 30 mm       | 2 item                     | 15 - 22 mm               | Yes       | 9079-55  | 10 / 30                   |
| 150 x 150 x 30 mm       | 1 item                     | 25 - 32 mm               | Yes       | 9079-49  | 10 / 30                   |
| 230 x 230 x 50 mm       | 1 item                     | 42 - 55 mm               | Yes       | 9079-51  | - / 4                     |
| 230 x 230 x 50 mm       | 1 item                     | 50 - 75 mm               | Yes       | 9079-52  | - / 4                     |
| 230 x 230 x 50 mm       | 1 item                     | 75 - 90 mm               | Yes       | 9079-53  | - / 4                     |
| 320 x 320 x 50 mm       | 1 item                     | 100 - 110 mm             | Yes       | 9079-54  | - / 4                     |

## KAISER primer

KAISER primer is a high-quality, solvent-free coating which optimises adhesion for all KAISER sealing sleeves on absorbent, mineral surfaces, for example masonry, concrete, plasterboard or wood materials. The self-adhesive primer is water and heat resistant. It can also be used on Styrofoam, EPS or XPS etc.



## Installation



The base must be dry and free of grease, oil and dust. Stir the primer thoroughly before working. Apply smoothly (apply twice to porous surfaces).



Before pressing the adhesive flange on, allow the primer to air until transparent. Thickened primer can be thinned with water.

## KAISER primer

- The self-adhesive primer is water and heat resistant. It can also be used on Styrofoam, EPS, XPS etc.



|                          |                |
|--------------------------|----------------|
| <b>Contents</b>          | <b>250 ml</b>  |
| <b>Art.-No.</b>          | <b>9000-02</b> |
| Inner packaging/shipping | - / 1          |