



Sound insulation value  $R_w$  up to **77 dB**

## Sound-insulation box

Sound insulation box for use in walls with increased demands on sound protection. The solid box body with additional sound insulation sheathing absorbs and reflects sound, which prevents disturbances in adjacent rooms. Sound insulation is the same as if no installation boxes were installed.

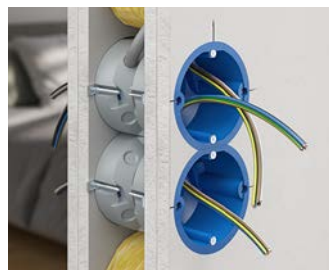
- Maintains the wall's sound insulation protection
- Also for retrofitting
- Installation up to 5-unit combinations
- Also for opposing installation
- Can be used with sound protection cover as a junction box



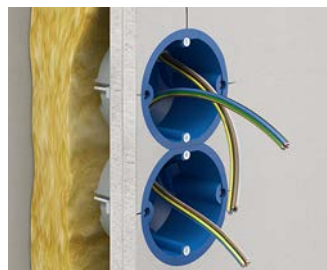
### Examples of use



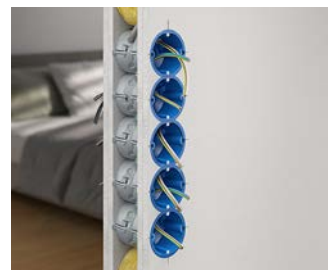
Example of installation of a switch/socket combination.



Use of an opposing sound insulation box.



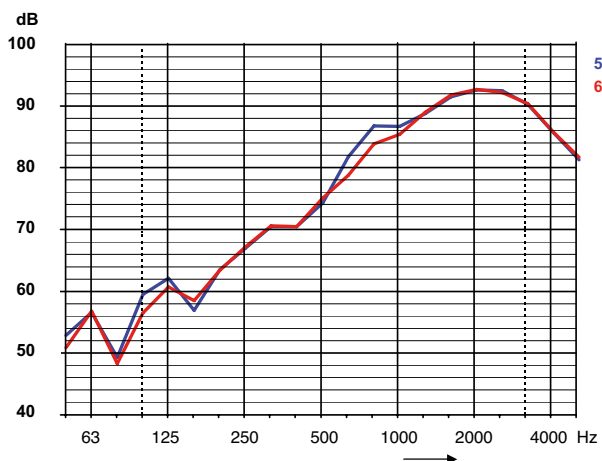
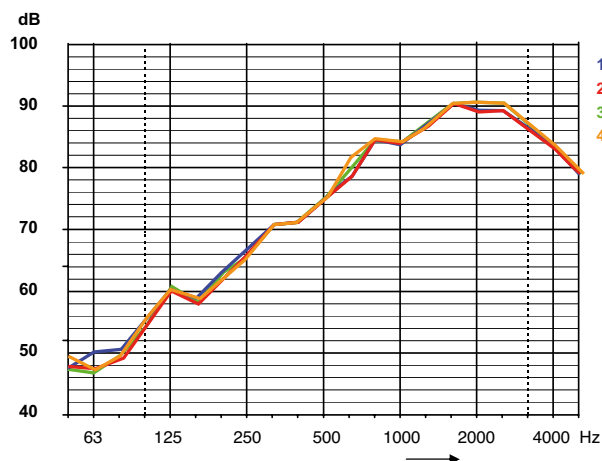
Use of a sound insulation box on one side of a double combination.



The sound insulation box can be used in up to five opposing combinations without weakening the sound insulation characteristics of the wall.

### Comparison of sound insulation

Lightweight wall (2-shell, each triple-boarded) with sound insulation one-gang junction boxes.



**1** Wall, without installations, 77 dB | **2** Sound insulation box 9069-01, single, with accessory, 77 dB | **3** Sound insulation box 9069-01, single, with cover, 77 dB | **4** Sound insulation box 9069-01, 5-way, with accessory, 77 dB | **5** Wall, without installations, 78 dB | **6** with sound insulation electronics box, 9069-94, 78 dB

## Sound-insulation box


- One-gang junction box for sound insulation walls in buildings
- Combination distance of 71 mm through single separation of the pre-embossed edge



Product-Data




3D animation

<b>Depth</b>	<b>54,5 mm</b>
For panel thickness	7 - 40 mm
Cut hole Ø	74 mm
Screw spacing	60 mm
Cable entries of up to Ø 11.5 mm	4
Support connectors for each package	5
for sound insulation walls up to	77 dB
Halogen-free	Yes
	Yes
<b>Art.-No.</b>	<b>9069-01</b>
Inner packaging/shipping	10 / 100

## Sound insulation cover

- for sound insulation box
- Sound insulation function in conjunction with sound insulation box



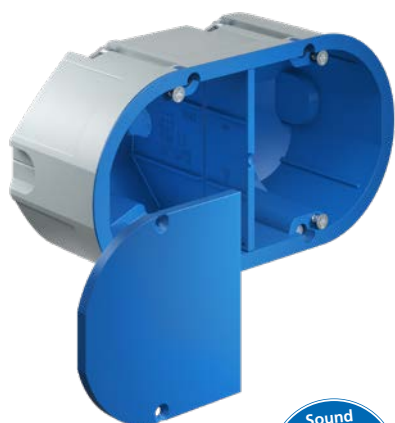
<b>Diameter</b>	<b>92 mm</b>
Halogen-free	Yes
	Yes
<b>Art.-No.</b>	<b>1184-69</b>
Inner packaging/shipping	10 / 100

## Support connector

- For fully insulated through-wiring in combinations
- for Art. No. 1555-21, 9069-01



<b>Halogen-free</b>	<b>Yes</b>
<b>Art.-No.</b>	<b>9060-88</b>
Inner packaging/shipping	25 / 100



Sound insulation value  $R'_{w}$  up to **78 dB**

## Sound insulation electronics box

Sound insulation electronics box for use in walls with increased demands on sound insulation. The sound insulation electronics box maintains the wall's sound insulation function and creates space for electronic switching devices, data boxes, cables and terminals. The electronics box makes possible population with cables and installation conduits up to M25.

- Maintains the wall's sound insulation protection
- Retrofitting is possible
- Also for use as a double box
- Extra-large terminal area for communications and network technology
- Additional space for electronic components (KNX actuators, relays, radio module, communications technology)



### Examples of use



The electronics box provides space for all possible installations e.g. KNX actuators, Venetian blinds relays, alarm modules and many more.



Also ideal for network connections. The generous box volume offers sufficient space for cable reserves.



The electronics box can also be used as a double box, e.g. for switch and socket combinations.



The electronics box can easily be combined with the sound insulation device junction box.

### Sound insulation electronics box


- Electronics box for sound insulation walls in buildings
- Also for use as a double box
- For equipment inserts and electronic components
- Can be combined with each other and also with a sound insulation one-gang junction box



3D animation



Product-Data

<b>Depth</b>	<b>70 mm</b>
For panel thickness	7 - 40 mm
Cut hole Ø	2 x 74 mm
Screw spacing	60 mm
Centre distance	71 mm
Conduit entries for DIN EN conduits up to Ø 25 mm	4
Cable entries of up to Ø 11.5 mm	4
for sound insulation walls up to	78 dB
Halogen-free	Yes
	Yes
<b>Art.-No.</b>	<b>9069-94</b>
Inner packaging/shipping	5 / 50

## Sound-insulation box 68

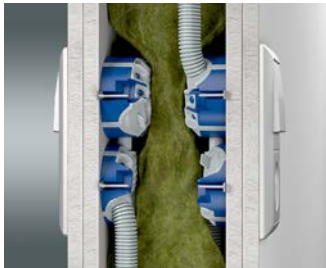
Thanks to their solid box body in combination with the sound-absorbing surface on the base of the box, sound insulation 68 one-gang and one-gang junction boxes guarantee the wall's sound insulation. This function is completely maintained even with directly opposing installation. The easy opening process and the 68 mm installation opening ensure fast mounting and also easy retrofitting in existing electrical installations.

- Maintains the wall's sound insulation protection
- Also for retrofitting
- For Ø 68 mm installation openings
- For a directly opposing installation
- Easy entry for cables up to Ø 11.5 mm and conduits up to Ø M25



Sound insulation value  $R_w$  up to **69 dB**

### Examples of use



For sound insulation walls with a sound insulation value of up to 69 dB.



Also for directly opposing installation up to a 5-way combination.



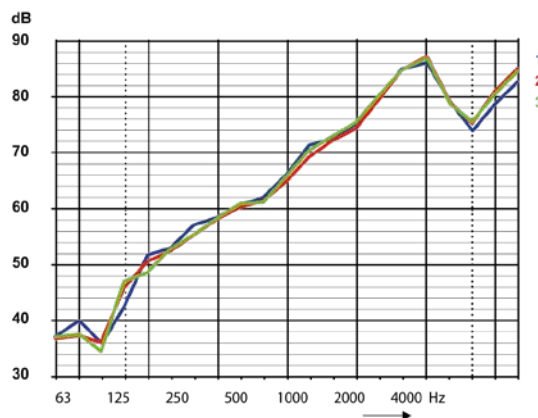
Can be combined with one-gang and one-gang junction boxes.



With a sound insulation cover (Art. No. 1184-69), it can also be used as a junction box.

### Comparison of sound insulation

Lightweight wall (2-layer, each triple-boarded)



**1** Wall, without installations, 69 dB. | **2** Sound insulation box 9069-03, single, with accessory, 69 dB. | **3** Sound insulation box 9069-04, single, with accessory, 69 dB. | **4** The solid box body and the sound-absorbing surface on the base of the box guarantee sound insulation up to 69 dB. | **5** Sound-absorbing strips on the box edge to reduce structure-borne sound. | **6** Easy opening of the conduit entry by means of pre-defined opening tab.

## One-gang box sound insulation 68

- for sound insulation walls
- also for directly opposing installation
- minimum wall thickness 100 mm
- can be combined with each other and with the one-gang junction box





 INNOVATION



3D animation



Product-Data

<b>Depth</b>	<b>49 mm</b>
Cut hole Ø	68 mm
Screw spacing	60 mm
Tube entries up to M25	2
Cable entries of up to Ø 11.5 mm	4
Support connectors for each package	5
For panel thicknesses up to	40 mm
for sound insulation walls up to	69 dB
Halogen-free	Yes
 / 	Yes / Yes
<b>Art.-No.</b>	<b>9069-03</b>
Inner packaging/shipping	10 / 100

## One-gang junction box sound insulation 68

- for sound insulation walls
- also for directly opposing installation
- minimum wall thickness 125 mm
- combinable with each other and with the one-gang box





 INNOVATION



3D animation



Product-Data

<b>Depth</b>	<b>61 mm</b>
Cut hole Ø	68 mm
Screw spacing	60 mm
Tube entries up to M25	2
Cable entries of up to Ø 11.5 mm	6
Support connectors for each package	5
For panel thicknesses up to	40 mm
for sound insulation walls up to	69 dB
Halogen-free	Yes
 / 	Yes / Yes
<b>Art.-No.</b>	<b>9069-04</b>
Inner packaging/shipping	10 / 100



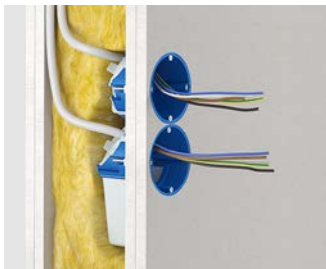
## Sound-insulation box 68 Flex

Thanks to its solid box body, in connection with the sound absorbing surface on the box base the Sound insulation 68 Flex electronics box guarantees the wall's sound insulation function. Additional insulating strips minimise body sound transfer via the component opening. Fast installation is ideal for modernising or extending existing systems. The flexible tunnel makes it easy to install, and creates space for electronic components, cable reserves and terminals.

- Maintains the wall's sound insulation protection
- For Ø 68 mm installation openings
- Additional sideway terminal compartment for communications and network technology
- Toolless cable and conduit entry
- Can be combined with support connectors, air-tight and fully-insulated



### Examples of use



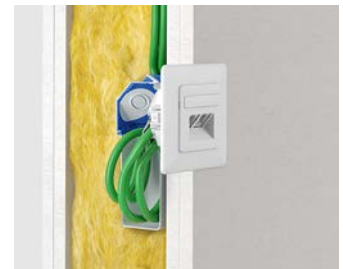
The combination with Sound insulation 68 one-gang and one-gang junction boxes is possible.



Additional space for connection terminals.



Accepts electronic components e.g. actuators.



Space for cable reserves.

### Sound-insulation box 68 Flex

- for sound insulation walls
- for accessories and electronic components
- Air-tight design with sealing membranes
- Elastic tunnel
- can be combined with sound insulation boxes 68





INNOVATION



3D animation



Product-Data

<b>Length x Width x Depth</b>	<b>122 x 71 x 75 mm</b>
For panel thickness	7 - 30 mm
Cut hole Ø	68 mm
Screw spacing	60 mm
Device screws +/-	2
Tube entries up to M25	2
Cable entries 3 x 2.5 mm <sup>2</sup> or 5 x 1.5 mm <sup>2</sup>	2
Cable entries 3 x 1.5 mm <sup>2</sup>	2
Air-tight	Yes
for sound insulation walls up to	68 dB
Halogen-free	Yes
 / 	Yes / Yes
<b>Art.-No.</b>	<b>9068-94</b>
Inner packaging/shipping	10 / 100